



# State Facilities Plan for Athletics in Queensland

May 2026



This report has been prepared by:

ROSS Planning Pty Ltd  
 ABN 32 508 029 959  
 11/210 Queensport Rd Nth  
 Murarrie QLD 4172

PO Box 5660  
 MANLY QLD 4179

P: (07) 3521 5543  
 E: info@rossplanning.com.au  
 W: www.rossplanning.com.au

Document Control:

VERSION	DATE	DOCUMENT	AUTHOR	REVIEWER	RECIPIENT
1	01.05.26	Draft	DC	SW	AB, DG, CD
2	15.05.26	Final	DC		AB, DG, CD

© 2026 ROSS Planning Pty Ltd

*This document may only be used for the purpose for which it was commissioned and in accordance with the terms of engagement for the commissions. Unauthorised use of this document in any form whatsoever is prohibited.*



## Contents

1	Executive summary.....	5
2	Background.....	7
3	Facility demand .....	19
4	Action plan.....	55



Barlow Park, Cairns



# Executive summary

The Queensland State Facilities Plan for Athletics provides a clear direction for future synthetic facility planning and development. It provides an analysis of existing provision and demand, projects future need and highlights key facility gaps and opportunities.

It is recognised that a range of athletics (and Little Athletics) training and competition is undertaken at grass facilities across the State. The Little Athletics Queensland State Facilities Plan (2024) addresses demand at many of these venues. This State Facilities Plan for Athletics provides a prioritised roadmap for the provision of synthetic athletics facilities - recognising the importance of these higher-level facilities and the impact of distances between key population bases across the length of the State.

The Plan provides a simple tiered hierarchy for synthetic athletics facilities that provides a sustainable network - reducing the likelihood of unnecessary facility duplication. The hierarchy identifies preferred facility inclusions at regional- and state- (and beyond) level. It is important to note, that these benchmarks should only be considered as a guide with ultimate facility development reflective of the manner in which the sport is delivered locally, availability of space and land attributes, and access to necessary funding and resources.

The Plan recognises the different delivery models for athletics across the State. There are venues that host Little Athletics, those that host clubs providing for all ages of athletes, and those providing for older athletes. Additionally, in more metropolitan areas, there are synthetic venues that are not 'home' to individual clubs. These facilities host training and competition for athletes representing many clubs and Little Athletics centres. While accessibility to synthetic facilities is a key consideration for this Plan, it is also recognised that people will travel to participate with certain coaches, participate with certain friends and training groups, and/or participate at a certain level.

With a number of councils and athletics clubs keen to deliver a more quality athletics product by developing synthetic facilities, combined with the fact that Queensland is set to host a number of key athletics events in the lead up to the Brisbane 2032 Olympic and Paralympic Games, there is scope to formalise the provision of synthetic athletics facilities across the State.

## Prioritised demand

There are currently 16 synthetic athletics facilities across the State. Use of these facilities varies markedly depending on whether it is a community-based or private facility.

There is also a facility set for development in 2027 at the Gold Coast, while feasibility and detailed design are being undertaken for facilities in Toowoomba, Ipswich and Rockhampton.

The Action Plan in Section 4 provides a more detailed description of proposed key infrastructure development, but in summary this State Facilities Plan identifies the following new facilities (in addition to a range of facility upgrade and synthetic replacement projects):

- High Priority
  - QSAC master plan implementation
  - Pizzey Park synthetic athletics facility
  - Rockhampton synthetic athletics facility
  - Toowoomba synthetic athletics facility
  - Ipswich synthetic athletics facility
- Medium Priority
  - Moreton Bay synthetic athletics facility
  - Logan synthetic athletics facility
- Low Priority
  - Gladstone synthetic athletics facility.



*Mackay Aquatic and Recreation Complex Athletics Facility*

A large, dark red circle with a white center, containing the number '2' in a bold, dark red font.

# Background

## Project overview

Queensland Athletics, Little Athletics Queensland (and Australian Athletics) recognise for the sport to remain an attractive sport-of-choice, athletes, officials, volunteers and spectators need access to quality facilities.

With Brisbane (and Queensland) set to host the Olympic and Paralympic Games in 2032, there is growing interest in the need for synthetic athletics facilities that can provide an avenue for local athletes to develop and succeed. Additionally, a number of councils recognise potential for hosting pre-Games athletics content and the benefits this can have on the local economy and athletics community. As a result, there are a number of synthetic athletics facility projects across the State. For some, planning is well-advanced, some are at feasibility stage, while others are at early stage of discussion of potential opportunity. This Plan provides a prioritised framework for (responsible and sustainable) delivery of synthetic facilities across the State.

# Athletics delivery in Queensland

There are two key pathways for participation in athletics in Queensland - association-based system and school-based system. Within the association-based system there are three peak bodies: Little Athletics Queensland (LAQ), Queensland Athletics (QA) and Athletics North Queensland (ANQ).

## Association-based delivery

In 2026, there are more than 32,000 registered athletes (and cross country runners) between LAQ, QA and ANQ. Additionally, there are tens of thousands of parents, officials, volunteers and coaches involved in the sport each week.

For LAQ, participation is based on a traditional 'club-based' model with athletes meeting weekly at their home venue to undertake competition. A majority of centres also provide some form of training (coaching) on a regular basis at the home venue. The 'club' approach is not as evident in Queensland Athletics (particularly in South East Queensland) with athletes travelling to key venues to train where their preferred coach is based rather than being linked to a geographical club location. Additionally, athletes attend competitions at various high-level facilities conducted by facility managers and peak bodies rather than being bound to club-based activities.

There are increasing numbers of clubs being established as dual LAQ-QA organisations. This approach fosters an ethos of athletics-for-all and is well-supported by the two peak bodies. Indeed, Little Athletics Australia and Australian Athletics have recently agreed to national unification of the sport<sup>1</sup>.

In the north of the State, there is an alternate 'provider' of athletics - ANQ. ANQ clubs tend to provide a melded athletics program adopting facets of both LAQ (offering weekly competitions with athletes encouraged to participate in all events; providing for athletes as young as 4 years) and QA (providing formal coaching and pathways through to National Championships and beyond; and providing opportunities for masters-aged athletes).

Clear representative pathways exist for both association-based systems. For QA, athletes can compete at regular weekly meets and carnivals, State Championships (in individual events, relays and multi-events) and can qualify for National Championships (and higher honours). For LAQ, athletes compete at centre level; can undertake regional-level participation in relays, individual events and multi-events; and depending on results can qualify for state-level championships. Additionally, athletes in the U12 and U13 age groups have an opportunity to compete at a national-level annually. Finally, LAQ also conducts a range of high-level carnivals open to all athletes (e.g. Spring and Summer Carnival).

## School-based delivery

Athletics remains one of the core sports offered to all children in the Queensland school system. As the peak body, Queensland School Sport (through its Primary School and Secondary School Track and Field Committees) oversees the representative pathway for athletics. Opportunity exists for students aged 10 to 19 years to represent school sport districts, regions and potentially Queensland.

In the vast majority of cases, the facilities used for school district, regional and state events are also used for LAQ, QA and ANQ training and competition.

---

<sup>1</sup> that commenced in April, 2026

## Queensland Sport and Athletics Centre

The Queensland Sport and Athletics Centre (QSAC) (located at Nathan in Brisbane) is a focus point for high-level athletics training and competition. The venue includes two international standard athletics facilities (a 48,500 seat Main Stadium and a 2,100 seat State Athletics Facility). It is one of only two locations in Australia with access to two adjoining synthetic facilities of this nature. It is also home to the National Throws Centre opened in early 2023. The synthetic surfaces and grass infield at the State Athletics Facility were replaced in early 2026. Given its importance to athletics delivery, a master planning process is underway for QSAC highlighting the need for facility upgrades to ensure it continues to meet contemporary facility requirements.

QSAC is heavily used for training at all levels throughout the year. Additionally, it hosts the full range of events across both the association- and school-based systems:

- ❑ QA
  - regular shield meets (weekly inter-club competitions)
  - state championships
  - national series meets and national championships
- ❑ LAQ
  - regional relays and championships
  - state carnivals and championships
  - national championships
- ❑ School sport
  - individual school carnivals
  - inter-school carnivals (e.g. Greater Public Schools and Associated Independent Colleges)
  - district and regional school carnivals
  - State school championships.

It should also be noted that venues such as Townsville Sports Reserve, Mackay Aquatic & Recreation Centre and Barlow Park (Cairns) also host state-level (and above) events on occasion.

QSAC - Main Stadium



QSAC - State Athletics Facility



# Athletics facility standards

## Sport infrastructure hierarchy

The use of hierarchies when undertaking planning for community infrastructure is a long-held practice. Providing facilities at different levels ensures a network of sustainable opportunities that reflect community demand (and resources). The hierarchy provides a guide for what infrastructure should be provided, depending on where the facility fits within the hierarchy.

The hierarchy assists facility developers by providing a framework to guide facility planning and asset management, day-to-day operations and in managing community (and peak body) expectations.

Identifying facility standards and the associated track and field event and ancillary buildings inclusions is not a straightforward exercise. Depending on whether the facility is to host Little Athletics, school or club activities (or a combination) and depending on what level of activity is to be expected (from local-level training through to international events), the facility expectations vary markedly.

It is also important to note that World Athletics (the peak body for the sport) also has its own classification (and accreditation system). There are two classes of certification for outdoor venues. Class 1 facilities need to meet all track and field facilities measurement requirements and have the synthetic surface field tested by a World Athletics approved laboratory. This is the highest class and is required for hosting international meets. There are 128 Class 1 facilities across the world (with only 2 in Australia)<sup>1</sup>. Class 2 facilities are far more common - with 568 world-wide, including 38 in Australia. While Class 2 facilities still need to meet all track and field facilities measurements, they are not required to have the synthetic surface field tested. Rather, they must simply be constructed of a World Athletics approved product.

For each type of athletics venue, the following table presents indicative athletics and ancillary facility requirements.

<sup>1</sup> as at March 3, 2026

## Athletics venue types

VENUE TYPE	ATHLETICS FACILITY INCLUSIONS	ANCILLARY FACILITY INCLUSIONS
<b>School athletics venues</b>		
School facility	<ul style="list-style-type: none"> <li><input type="checkbox"/> Minimum 6-lane 200m track (with 100m straight area)</li> <li><input type="checkbox"/> Minimum 1 grass area for all field events</li> </ul>	<ul style="list-style-type: none"> <li><input type="checkbox"/> No facilities likely to be required in addition to buildings included within the school campus</li> </ul>
District-level	<ul style="list-style-type: none"> <li><input type="checkbox"/> 8-lane 400m track (grass or synthetic)</li> <li><input type="checkbox"/> 2 LJ approaches (preferably synthetic)</li> <li><input type="checkbox"/> 2 concrete SP circles</li> <li><input type="checkbox"/> 2 concrete DIS circles (with cages)</li> <li><input type="checkbox"/> No TJ or JAV facilities are required for primary districts</li> </ul>	<ul style="list-style-type: none"> <li><input type="checkbox"/> Minimum 10 pedestals</li> <li><input type="checkbox"/> Minimum 4 bay shed</li> <li><input type="checkbox"/> Canteen with large servery</li> <li><input type="checkbox"/> Minimum 200 space car park (over 400 spaces required for larger regional events)</li> </ul>
Regional-level	<ul style="list-style-type: none"> <li><input type="checkbox"/> 8-lane 400m track (synthetic)</li> <li><input type="checkbox"/> 4 LJ/TJ approaches (synthetic)</li> <li><input type="checkbox"/> 2 HJ fans (synthetic)</li> <li><input type="checkbox"/> 2 concrete SP circles</li> <li><input type="checkbox"/> 2 concrete DIS circles (with cages)</li> <li><input type="checkbox"/> 2 JAV approaches (synthetic)</li> </ul>	<ul style="list-style-type: none"> <li><input type="checkbox"/> Minimum 10 pedestals</li> <li><input type="checkbox"/> Minimum 4 bay shed</li> <li><input type="checkbox"/> Canteen with large servery</li> <li><input type="checkbox"/> Minimum 200 space car park (over 400 spaces required for largest events)</li> </ul>
State-level and beyond	<ul style="list-style-type: none"> <li><input type="checkbox"/> 8-lane 400m track (synthetic)</li> <li><input type="checkbox"/> 4 LJ/TJ approaches (synthetic)</li> <li><input type="checkbox"/> 2 HJ fans (synthetic)</li> <li><input type="checkbox"/> 2 concrete SP circles</li> <li><input type="checkbox"/> 2 concrete DIS circles (with cages) with one suitable for HAM</li> <li><input type="checkbox"/> 2 JAV approaches (synthetic)</li> <li><input type="checkbox"/> Lighting to at least 200 lux</li> <li><input type="checkbox"/> Photofinish booth</li> <li><input type="checkbox"/> Large warm-up area (approx 2ha) preferably with all field event facilities and lit</li> </ul>	<ul style="list-style-type: none"> <li><input type="checkbox"/> Administration and announcing area</li> <li><input type="checkbox"/> Officials' room</li> <li><input type="checkbox"/> Large amenities and changerooms (showers)</li> <li><input type="checkbox"/> Extensive storage opportunities</li> <li><input type="checkbox"/> Large canteen</li> <li><input type="checkbox"/> Grandstand seating for at least 1,200</li> <li><input type="checkbox"/> Minimum 800 car parking spaces within walking distance</li> </ul>

VENUE TYPE	ATHLETICS FACILITY INCLUSIONS	ANCILLARY FACILITY INCLUSIONS
<b>Little Athletics venues<sup>1</sup></b>		
Centre-level (Hierarchy 1)	<input type="checkbox"/> 8-lane 400m grass track <input type="checkbox"/> 1-2 areas for all field events	<input type="checkbox"/> Small amenities (4-8 pedestals) <input type="checkbox"/> 2-4 bay shed <input type="checkbox"/> Small servery <input type="checkbox"/> 90-180 space car park
Regional-level (Hierarchy 2)	<input type="checkbox"/> 8-lane 400m track (grass or synthetic <sup>2</sup> ) <input type="checkbox"/> 4 LJ/TJ approaches (preferably synthetic) <input type="checkbox"/> 2 concrete SP circles <input type="checkbox"/> 2 concrete DIS circles (with cages) <input type="checkbox"/> 2 JAV approaches (grass or synthetic)	<input type="checkbox"/> Minimum 10 pedestals <input type="checkbox"/> Minimum 4 bay shed <input type="checkbox"/> Canteen with large servery <input type="checkbox"/> Minimum 200 space car park (over 500 spaces required for larger regional events)
State-level and beyond (Hierarchy 3)	<input type="checkbox"/> 8-lane 400m track (synthetic) <input type="checkbox"/> 4 LJ/TJ approaches (synthetic) <input type="checkbox"/> 2 HJ fans (synthetic) <input type="checkbox"/> 2 concrete SP circles <input type="checkbox"/> 2 concrete DIS circles (with cages) <input type="checkbox"/> 2 JAV approaches (synthetic) <input type="checkbox"/> Lighting to at least 200 lux <input type="checkbox"/> Photofinish booth	<input type="checkbox"/> Administration and announcing area <input type="checkbox"/> Officials' room <input type="checkbox"/> Large amenities and changerooms (showers) <input type="checkbox"/> Extensive storage opportunities <input type="checkbox"/> Large canteen <input type="checkbox"/> Minimum 800 car parking spaces within walking distance
<b>Club athletics venues</b>		
Club-level (training)	<input type="checkbox"/> 6-lane 400m grass track <input type="checkbox"/> 2 LJ/TJ approaches (preferably synthetic) <input type="checkbox"/> Minimum 1 concrete SP circle <input type="checkbox"/> Minimum 1 concrete DIS circle (with cage) <input type="checkbox"/> Minimum 1 JAV approach (grass or synthetic)	<input type="checkbox"/> Minimum 2 pedestals <input type="checkbox"/> Minimum 4 bay shed <input type="checkbox"/> Minimum 30 space car park
QA Shield meet-level (regional-level)	<input type="checkbox"/> 8-lane 400m track (synthetic) <input type="checkbox"/> 2 LJ/TJ approaches (synthetic) <input type="checkbox"/> 2 HJ fans (synthetic) <input type="checkbox"/> 1 concrete SP circle <input type="checkbox"/> 1 concrete DIS/HAM circle (with cage) <input type="checkbox"/> 1 JAV approach (synthetic) <input type="checkbox"/> Lighting to at least 200 lux <input type="checkbox"/> Photofinish booth	<input type="checkbox"/> Administration and announcing area <input type="checkbox"/> Officials' room <input type="checkbox"/> Large amenities and changerooms (showers) <input type="checkbox"/> Extensive storage opportunities <input type="checkbox"/> Large canteen <input type="checkbox"/> Minimum 300 car parking spaces
QA State-level	<input type="checkbox"/> 8-lane 400m track (synthetic) <input type="checkbox"/> 4 LJ/TJ approaches (synthetic) <input type="checkbox"/> 2 HJ fans (synthetic) <input type="checkbox"/> 2 concrete SP circles <input type="checkbox"/> 2 concrete DIS circles (with cages) with one suitable for HAM <input type="checkbox"/> 2 JAV approaches (synthetic) <input type="checkbox"/> Lighting to at least 200 lux <input type="checkbox"/> Photofinish booth	<input type="checkbox"/> Administration and announcing area <input type="checkbox"/> Officials' room <input type="checkbox"/> Large amenities and changerooms (showers) <input type="checkbox"/> Extensive storage opportunities <input type="checkbox"/> Large canteen <input type="checkbox"/> Grandstand seating - at least 500 <input type="checkbox"/> Minimum 500 car parking spaces within walking distance
National and above-level	<input type="checkbox"/> 8-lane 400m track (synthetic) <input type="checkbox"/> 4 LJ/TJ approaches (synthetic) <input type="checkbox"/> 2 HJ fans (synthetic) <input type="checkbox"/> 2 concrete SP circles <input type="checkbox"/> 2 concrete DIS circles (with cages) with one suitable for HAM <input type="checkbox"/> 2 JAV approaches (synthetic) <input type="checkbox"/> Lighting to at least 500 lux <input type="checkbox"/> Photofinish booth <input type="checkbox"/> Large warm-up area (approx 2ha) preferably with all field event facilities	<input type="checkbox"/> Multiple administration areas <input type="checkbox"/> Announcing area <input type="checkbox"/> Officials' room <input type="checkbox"/> Large amenities and changerooms (showers) <input type="checkbox"/> Extensive storage opportunities <input type="checkbox"/> Large canteen <input type="checkbox"/> Grandstand seating for at least 1,000 <input type="checkbox"/> Minimum 500 car parking spaces within walking distance

<sup>1</sup> Little Athletics Queensland - State Facilities Plan, 2024

<sup>2</sup> Although LAQ preference is for regional-level events to be conducted at synthetic facilities wherever possible

## What facility hierarchy should new facilities be developed at?

The State Facilities Plan recognises that different facilities in different locations will host varied levels of events. In North Queensland, facilities may host regular weekly Little Athletics (and junior athletics) content yet may also host international events such as the Oceania Championships on-occasion. In South East Queensland, the highest level events will continue to be hosted at QSAC Main Stadium, but this does not preclude satellite venues hosting large district and regional carnivals.

Given potential for hosting events (and potential pre-Games content) it is preferred that all new synthetic athletics facilities be constructed to World Athletics Class 2 certification. Using the school, Little Athletics and athletics facility hierarchy detailed on the previous pages, new synthetic facilities (other than the two venues at QSAC) should be aimed at regional-level and generally look to include:

### **Event facilities**

- 8-lane 400m track (synthetic)
- 4 long jump/triple jump approaches (synthetic)
- 2 high jump fans 'Ds' (synthetic)
- 2 concrete shot put circles
- 2 concrete discus circles (with cages - and one suitable for hammer)
- 2 javelin approaches (synthetic)
- Lighting to at least 200 lux
- Photofinish booth

### **Ancillary facilities**

- Large amenities and changerooms (showers)
- Administration and officials' area
- Extensive storage opportunities
- Large canteen
- Canteen with large servery.

Within this hierarchy there is scope to increase or decrease facility inclusions to meet local demand. For instance, a facility that hosts a very large Little Athletics centre (and or large school carnivals) may require a 10-lane straight and additional shot put circles, while a development hosting smaller numbers and with budget constraints may include just one synthetic D. Ultimate facility inclusions should be determined through engagement with local user groups, peak bodies and facility developers with outcomes included through the design process.

## Ancillary facility considerations

While many state and national sporting organisations have developed quite descriptive facility requirements for each hierarchy level - this has not been undertaken for athletics at this point. Indeed, the nature of an athletics facility makes this quite a difficult exercise. For much of the time, an athletics facility may only attract a small number of patrons (e.g. 20-30 training athletes) and only result in demand for one or two pedestals and no canteen. A regular weekly use during the peak season may attract 400-500 participants for two to three hours - and result in the need for four to eight pedestals and a small canteen. Yet, a few times each season the facility may host large carnivals with over 700 athletes and large numbers of spectators across multiple days. This will create demand for more extensive facilities (that are not required for much of the time). In this instance, hire facilities may be a more attractive consideration than permanent construction. Regardless, Australian Athletics will prepare a National Facilities Plan later in 2026 that considers the outcomes of State-level plans and looks to adopt a consistent facility hierarchy approach that provides alignment at State and National level.

At the lowest level hierarchy, limited ancillary facilities are required. However, for regional-level (QA Shield meet-level) and beyond venues, significant ancillary infrastructure is required. With inclusions such as amenities, canteen, large storage and significant sealed car parking all considered necessary, indicative capital costs could be above \$4m (indeed beyond the construction costs of the athletics facilities). This figure grows significantly for the highest level facilities where grandstands, administration and announcing areas, officials' rooms and very large car parks are required.



Gold Coast Performance Centre



Townsville Sports Precinct

## Influence of trends in sport

Participation patterns in sport are changing at a community level. Factors such as a move toward non-organised or social sport, increased outdoor nature-based recreation and increased use of technology have all had a significant impact on how people recreate. Understanding these trends (and their impacts) is important as sports facility providers look to develop infrastructure that encourages people to be active, yet, presents a sustainable use of resources.

### Participation trends

#### Move away from formal sport

Since 2015, the Australian Sports Commission has conducted a national sport and physical activity participation survey, *AusPlay*. The most recent results of the survey were released in November 2025<sup>1</sup>. In 2011-12 and 2013-14, a similar survey, the *Participation in Sport and Physical Recreation Survey* was conducted by the Australian Bureau of Statistics (ABS). Between 2001-2010, the *Exercise, Recreation and Sport Survey* (ERASS) was conducted by the Committee of Australia Sport and Recreation Officials (CASRO).

Overall, participation in physical activity has increased in the last two decades. Female participation (at least once a year) has remained on par with male participation throughout. However, more women continue to participate more often.

Importantly, participation in sport-related activities has decreased, while non-sport physical activities have increased significantly (by more than 20 percent since 2001). Participation in recreation activities such as walking and fitness/gym have increased the most.

More children participate in organised (out-of-school) sport, than adults. The top activities children participate in changes as children age, with a focus on the life skill of swimming for infants and toddlers and running, fitness/gym, football and walking being the dominant activities by the time children reach the ages between 15 and 24 years old.

National participation rates in organised sport have been declining for a number of years as participants move toward more social (drop-in drop-out) sport and informal recreation. However, it is important to note that participation in athletics in Queensland (and Nationally) is growing well - with almost 5,000 additional athletics and Little Athletics members between 2024 and 2025 (and membership expected to be higher again once the 2026 season is complete).

Membership	2023/24	2024/25
Queensland Athletics <sup>1</sup>	14,430	16,974
Little Athletics Queensland	13,245	15,428
Total	27,675	32,402

1- includes ANQ and cross country membership

Participation in athletics (particularly junior athletics) is far greater than this number with more than 500,000 school students involved in various athletics and cross country carnivals each year.

More detail regarding demand is included within the individual location analyses.

#### Busy lifestyles

Shift work, increases in part-time and casual employment and family commitments influence participation as:

- people do not have the time to commit as a regular participant or volunteer
- people seek facilities and participation opportunities with flexible hours.

A number of peak bodies are investigating additional delivery models such as social fixtures or 'pay as you play' approaches to address membership concerns. QA provides a 'Base Membership' providing a much lower fee for irregular participation.

#### Diversification of sport

Modified versions of traditional sports (such as T20 cricket and pickleball) are burgeoning. Changes are placing additional pressure on councils with regard to playing field and court capacity, facility flexibility and need to plan for additional demand.

Interestingly, fitness racing 'sports' are seeking quality outdoor venues, further impacting availability and capacity. Throughout 2026, Paladin is being contested across six days (three separate events) at the QSAC State Athletics Facility.

#### Masters sport popularity

There are indications that people may continue to engage in sport later into their old age. The Australian Sports Commission highlights that organisations may need to provide a wider range of products tailored to meet the needs of older Australians.

Athletics has long-been a preferred sport for older athletes. In Queensland, clear pathways exist from local through to international participation.

<sup>1</sup> After 2023 (and moving forward), a different methodology has been employed to collect AusPlay data. This has resulted in data being collected up to 2023 not being able to be compared with future data. However, a consistent methodology was used up until 2023 allowing for comparisons and trend determination.

## Facility trends

### Field quality

Facility providers face an increasing trend to develop and re-develop sporting fields to a higher level in order to increase carrying capacity (and to meet expectations from peak bodies). Upgrades, such as lighting and field irrigation and drainage, allow training and competition times to be extended and increases the ability of turf playing fields to cope with the resulting wear and tear. Further, to achieve ongoing field quality, fields need 'rest periods' (of up to four weeks) where necessary maintenance can be undertaken.

The replacement of turf fields with synthetic fields, however, can significantly increase carrying capacity by limiting maintenance-required field down time. Since the 1968 Mexico City Olympic Games used a synthetic track for athletics, these tracks have become the norm for all higher-level athletics events. In fact, many schools, universities, councils and even a small number of clubs are now developing synthetic facilities.

Modern synthetic surfaces have been designed to provide the athlete with an even, controllable surface with superior dynamic characteristics. Also, synthetic tracks require minimal maintenance compared with grass surfaces (with maintenance very cost effective over the life of the surface).

This Plan is focussed on synthetic facility development and the industry continues to deliver more attractive surfaces through technological advancement.

### Field sharing

With many sports extending the lengths of pre-season and season fixtures, sports are no longer classifying themselves as strictly summer or winter sports. This has led to the sharing of fields becoming more difficult. While providers strive to maximise the use of community resources (and State Government espouses field sharing), the reality is that shared use of ancillary facilities (e.g. pavilions, car parks) rather than fields will be more likely.

Athletics is a year-round sport. While peak competition is during the summer sporting season for much of the State (and includes State and National Championships), the winter sporting season hosts athletics events in the north and west of the State. Additionally, many international events are conducted throughout the Australian winter sporting season. As a result, there are many avenues for athletes to train and compete across the year. While there are examples of athletics facility infields being shared by additional sports user groups (e.g. University of Queensland, Barlow Park) preference is for standalone athletics venues where issues due to hammer divots and use clashes can be avoided.

### Increasing capital and operating costs

The rapid rise in the cost to build sports facilities, driven by material shortages (steel, concrete) and labour demand, may require a shift in how venues are developed, funded, and operated. Resource realities simply cannot allow for every sport and user group to have access to every facility they desire. Facility providers will need to consider efficient designs and may also need to recognise need to scale back project designs (and community expectations).

While World Athletics dictate facility technical specifications, opportunities for saving such as smaller synthetic 'D's' (at facilities hosting smaller events) and innovative building design (and re-use of existing buildings) should be carefully considered as new athletics facilities are planned.

### **TREND CONSIDERATIONS - KEY IMPLICATIONS**

In terms of impacts for the development of the State Facilities Plan, these trend considerations suggest:

- social sport and modified games are becoming increasingly popular, and can increase participation in sport across all age groups, and particularly people over the age of 40
- demand for higher standard facilities, including lighting, well-drained turf, and all-weather facilities is increasing - and athletics is well-positioned with this regard
- demand for gender neutral facilities that are inclusive and attractive to all. It is important to note that athletics is an attractive sport for all ages and abilities

## Literature review

In order to present a clear picture of the background issues and opportunities influencing the potential development of synthetic athletics facilities across the State, a literature review has been undertaken. Relevant policies and adopted strategies and plans have been reviewed and considered in preparation of the Plan.

### Places to Play Plan - National Community Sport Infrastructure

While the detailed action plan is still under development, the Plan overview highlights the need to 'move from a predominant focus on investing in new infrastructure towards investing in accessible, high quality, inclusive participation outcomes *through* infrastructure'. It encourages a model that supports shared use, flexible and accessible facilities; evidence-based investment; and participation, inclusion and wellbeing as measures of success.



### Australian Athletics National Participation Plan 2026-2034

The Plan looks to achieve the goal of 'everyone has a place in athletics' through initiatives spread across eight themes. Key initiatives influencing this State Facilities Plan include:

- develop evidence-based state and national facilities plans
- develop guides for complementary facilities such as 200m short track
- advocate for increased investment in athletics facilities
- improve access to existing venues and use smaller and non-traditional spaces<sup>1</sup>.

Importantly, one of the key success factors is identified as *more places and spaces for Australians to participate in athletics*.



### Queensland Athletics Strategic Plan 2023-2026

This document articulates Queensland Athletics' key directions acknowledging the impact of a home Olympics and Paralympics and recognising a goal for athletics to be the number one Olympic sport in Queensland.

In terms of facilities, the Strategic Plan identifies the need to:

- deliver a high quality competition experience at all QA competitions
- leverage major events within Queensland
- work with the Brisbane Organising Committee for the Olympic and Paralympic Games to deliver the best legacy opportunities from the 2032 Games.

Clearly, these actions highlight the importance of a clear plan that delivers a State-wide network of sustainable synthetic athletics facilities.



<sup>1</sup> The Australian Athletics Short Track Facilities Overview and Guidance report (2026) provides additional support for this direction

## Little Athletics Queensland State Facilities Plan<sup>1</sup>

The Little Athletics Queensland State Facilities Plan provides all stakeholders in the Little Athletics community with a clear direction for future facility planning and development. It provides an analysis of existing provision and demand, projects future need and highlights key facility gaps and opportunities.

The Plan includes a hierarchy of inclusions (and guidelines for preferred facilities for various sized Little Athletics centres). While synthetic approaches are preferred for long jump, triple jump, high jump and javelin, at centre-level, synthetic tracks are not necessary.

However, it should be noted that LAQ preference is for regional events to be hosted at synthetic athletics facilities where they exist within the region. Additional comment regarding the importance of the LAQ State Facilities Plan is included toward the end of Section 3.



<sup>1</sup> ROSS Planning, 2024

### STRATEGIES AND PLANS - KEY IMPLICATIONS

When considered together, the literature review highlights a number of key considerations:

- There is clear drive from the peak bodies to see continued growth in the sport
- Provision of quality environments and opportunities will be an important factor to ensure participation increases
- Moving forward, synthetic facilities will be the preferred avenue for athletics participation (across most levels).





# 3

## Facility demand

### Quantifying demand - Preferred provision rates

For many decades, councils have attempted to quantify the need for community open space for sport using provision ratios. The most common (and simplest) method has been to provide council-wide desired land standards for the network of open space. Using this approach, councils have adopted rates between 1.5-2.5ha/1,000 residents for sport land. More recently, there has been a move away from this approach given that it is somewhat arbitrary and does not necessarily reflect the needs of the local sporting community. For example, given that cricket and AFL ovals are far larger than the rectangular field sports; areas where AFL and cricket are popular, councils are likely to require more area for sport land. Additionally, provision of formal sport is often opportunistic - dependent on site-specific attributes (e.g. availability of suitable land), funding availability, and peak sports and local volunteers keen to lead formal development.

A number of peak sporting bodies have developed preferred provision rates for catchment populations (e.g. 1 oval/10,000 residents). This is a more tailored approach than seeking an overall provision rate for sport land as-a-whole. However, it tends to over-exaggerate demand and does not reflect that different sports/clubs can be more or less popular in different locations (e.g. rugby league has traditionally been very strong in Queensland, while AFL and football are rapidly increasing in popularity). ROSS Planning has developed a far more accurate approach by calculating preferred facility provision rates by club membership (e.g. 1 field for every 150 players) for most of the traditional field and court sports<sup>1</sup>. These standards were developed by considering training and competition requirements in a typical week - weighed up against sustainable loads and carrying capacity for fields (and considering the different impacts that juniors v seniors have on the same area of field). The preferred findings were then reviewed by peak sporting bodies. These preferred rates have been used in a number of demand modelling studies and it appears that they deliver realistic assessments of demand and can be used with confidence to project future provision. It is important to note, however, that athletics is one of the few sports where preferred facility provision rates by club membership is not an optimal planning approach. Club (and Little Athletics centre) use of synthetic facilities might be the most 'regular' form of activity (e.g. 20-30 athletes training daily), but it certainly will not be the most 'intense' use - with school carnivals attracting up to 1,000 students in a single day. Planning athletics facilities based solely on formal club membership is nonsensical.

#### **Access/distribution of facilities**

Considering provision of facilities within reasonable distance for most residents is a key planning task. However, it is clear that people choose to undertake different sports for different reasons and in different locations. People travel to attend particular sports because they:

- want to train and compete with a group of friends
- want to train and compete at a certain level of competition
- are attracted to a certain style of sport delivery (training early morning, training during the day etc)
- are attracted to a certain coach
- are attracted to a certain venue.

Given these considerations, synthetic facility access (distribution) will be used as the key planning tool rather than any capacity-related provision standards. For Central and North Queensland, preference is that more populated areas are within approximately a 2hr drive of a community synthetic facility (where practical), while within South East Queensland, planning is based on a 30min drive during 'typical' traffic conditions.

<sup>1</sup> A number of peak sports have recently begun adopting a similar approach for planning

## Location of existing synthetic athletics facilities



The image above indicates the location of the existing synthetic athletics facilities in Queensland. It is important to recognise that not all of these facilities are community-accessible (or offer limited community access).

Planned facilities are outlined the in the location analyses.

- |  |   |
|--|---|
| 1 - Barlow Park, Cairns  | 9 - State Athletics Facility, Nathan                |
| 2 - Townsville Sports Precinct, Townsville                           | 10 - Queensland Sports and Athletics Centre, Nathan |
| 3 - Mackay Aquatic and Recreation Complex Athletics Facility, Mackay | 11 - Ormiston College, Ormiston                     |
| 4 - Bundaberg Super Park, Bundaberg                                  | 12 - Sheldon College, Sheldon                       |
| 5 - University of Sunshine Coast, Sippy Downs                        | 13 - Canterbury College, Waterford                  |
| 6 - The Glennie School, Toowoomba                                    | 14 - Gold Coast Performance Centre, Runaway Bay     |
| 7 - Nudgee College, Boondall   | 15 - Griffith University (Gold Coast), Southport    |
| 8 - University of Queensland, St Lucia                               | 16 - Somerset College, Mudgeeraba                   |

## Service catchment

The table below provides existing and forecast populations for local government areas (LGAs) (with projected populations above 60,000) around Queensland. It provides robust background to the location of existing synthetic facilities and to those locations proposed throughout the location analyses.

It is recognised that synthetic facilities draw from outside the local government boundaries. However, the vast majority of users of a facility are expected to come from within that LGA and this approach provides an avenue for analysis.

LOCATION (LOCAL GOVERNMENT AREA)	EXISTING POPULATION (2021) <sup>1</sup>	POPULATION PROJECTION (2046) <sup>2</sup>	NUMBER OF EXISTING SYNTHETIC ATHLETICS FACILITIES <sup>3</sup>
Cairns	166,943	231,000	1
Townsville	192,768	265,000	1
Mackay	121,691	159,000	1
Livingstone	39,398	63,000	0
Rockhampton	81,968	96,000	0
Gladstone	63,515	78,000	0
Bundaberg	99,215	114,000	1
Fraser Coast	111,032	137,000	0
Noosa	56,298	66,000	0
Sunshine Coast	342,451	546,000	1
Moreton Bay	476,340	797,000	0
Brisbane	1,242,825	1,603,000	4
Redland	159,222	184,000	2
Logan	345,098	540,000	1
Gold Coast	625,087	983,000	3
Ipswich	229,208	529,000	0
Toowoomba	173,204	211,000	1

<sup>1</sup> ABS Census Quick Stats

<sup>2</sup> Queensland Government Statistician's Office (Projected Population Medium Series), 2023

<sup>3</sup> Noting that some facilities provide little to no community access

## Location analyses

The following section provides an analysis of synthetic athletics facility demand presented by LGA (location). The assessment has been prepared through:

- consideration of existing facilities
- club and Little Athletics centre attributes
- engagement with regional school sport athletics providers
- consideration of council and facility manager perceptions and planning initiatives.

The location analyses feed directly into the Action Plan and provide guidance to locals clubs, Queensland Athletics, Athletics North Queensland, Little Athletics Queensland, Australian Athletics and all levels of Government.

# Cairns

## Existing key facility attributes

Cairns Regional Council site: Barlow Park

### Event facilities

- 8-lane 400m synthetic track (with back straight and steeplechase water jump)
- 2 slightly small synthetic 'Ds'
- 3 double-ended synthetic LJ/TJ approaches (and 3 additional synthetic LJ/TJ approaches)
- 4 concrete shot put circles
- 2 concrete discus circles with cages (and additional caged circle on an adjoining field)
- venue is lit

### Ancillary facilities

- storage sheds
- large covered grandstand with canteen, amenities, social area, offices
- photofinish booth - administration room
- additional amenities
- back straight spectator's grass hill with amenities and canteen building
- large video replay screen
- sealed car parking

## Club considerations

CAIRNS ATHLETICS CLUB

### Membership

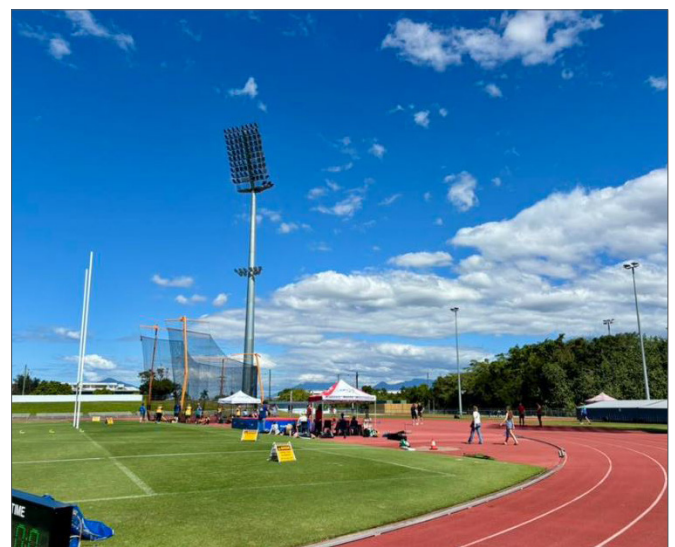
- 544 members in 2025
- significant recent increases

### Facility usage

- Friday night competition
- Wednesday and Thursday PM training

### Facility directions

- the facility meets the needs of the Club well



## School sport considerations

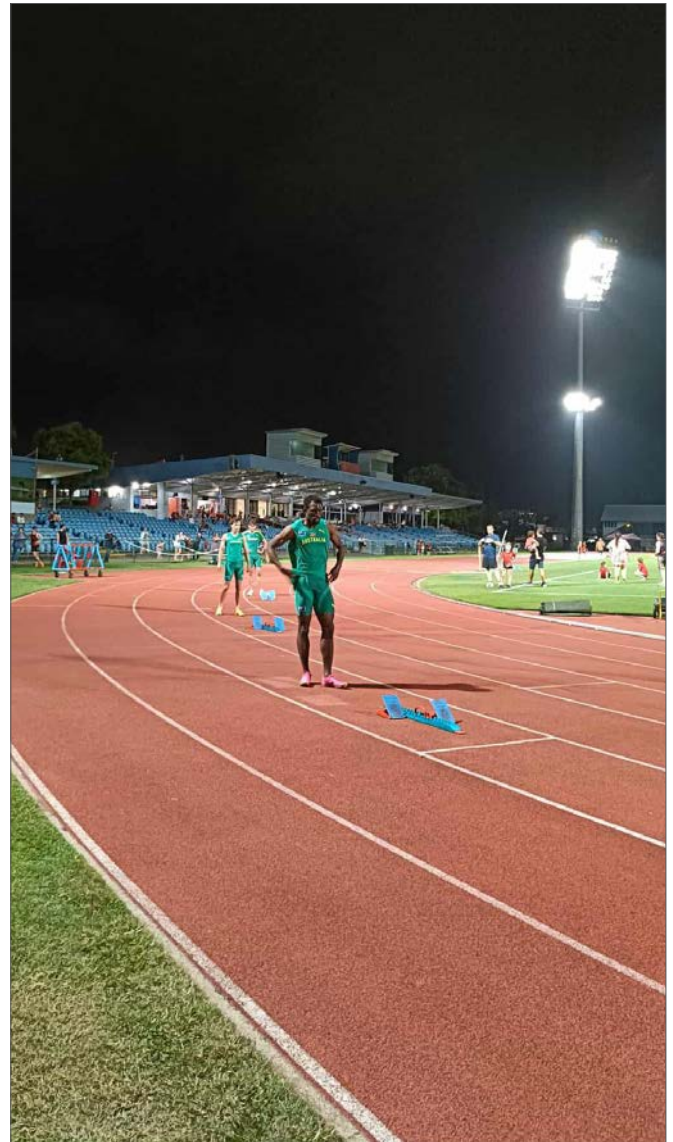
- ❑ The Peninsula Regional Trials and the three Trinity Coast District Trials are all conducted at Barlow Park
- ❑ The facility functions well for school athletics trials

## Council considerations

- ❑ Significant upgrades are planned at Barlow Park in the lead-in to the facility hosting football matches during the 2032 Olympic Games. In 2025, lighting was upgraded to 1,800 lux while a 100m<sup>2</sup> video replay screen was also installed
- ❑ The synthetic surface will be replaced in three years (once the grandstand re-development is complete)
- ❑ The grandstand will be removed and replaced with a 5,000 seat covered facility that includes, amenities, canteen, media rooms, changerooms, administration and photofinish areas, and multi-purpose rooms
- ❑ As part of a wider Events Centre master plan process, Council is also investigating opportunities to develop a warm-up track (preferably synthetic) within the precinct

## Facility directions

- ❑ The nearest synthetic athletics facility is at the Townsville Sports Precinct (4hrs drive south)
- ❑ As an identified site for hosting 2032 Olympic Games sport, Barlow Park has significant upgrades planned for coming years. Importantly, athletics will continue to be a key tenant at the site (and the proposed works will enhance athletics' operations)
- ❑ Support continued upgrades at Barlow Park (with athletics remaining as a key tenant) (Ongoing)



# Townsville

## Existing key facility attributes

State Government site: Townsville Sports Precinct

### Event facilities

- 8-lane 400m synthetic track (with back straight and steeplechase water jump)
- 1 synthetic 'D'
- 4 double-ended synthetic LJ/TJ approaches (and 1 additional synthetic LJ/TJ approach)
- additional synthetic javelin approach
- 4 concrete shot put circles
- 2 concrete discus circles with cages (1 on an adjoining field)
- venue is lit

### Ancillary facilities

- storage sheds
- large covered grandstand and adjoining canteen, amenities and office
- photofinish and administration area
- additional covered and uncovered seating
- sealed car parking



## Club considerations

TOWNSVILLE NORTH STAR ATHLETICS CLUB

### Membership

- 374 members in 2025
- steady increases

### Facility usage

- Friday night competition
- Wednesday and Friday PM training

### Facility directions

- the facility meets the needs of the Club well

Ross River Athletics Club is based at Kirwan State High School in Townsville. The Club is growing with 281 members in 2025 and conducts Friday night competitions.

Townsville Central Little Athletics Club is based at the grass athletics facility directly across the road from the Townsville Sports Precinct. Centre competitions are held on Saturday afternoons, and with 168 members in the 2025 season, the centre is growing well.



### School sport considerations

- ❑ The Northern Regional Trials and Townsville District Trials are both conducted at the Townsville Sports Precinct
- ❑ The facility functions well for all levels of school events

### State Government considerations

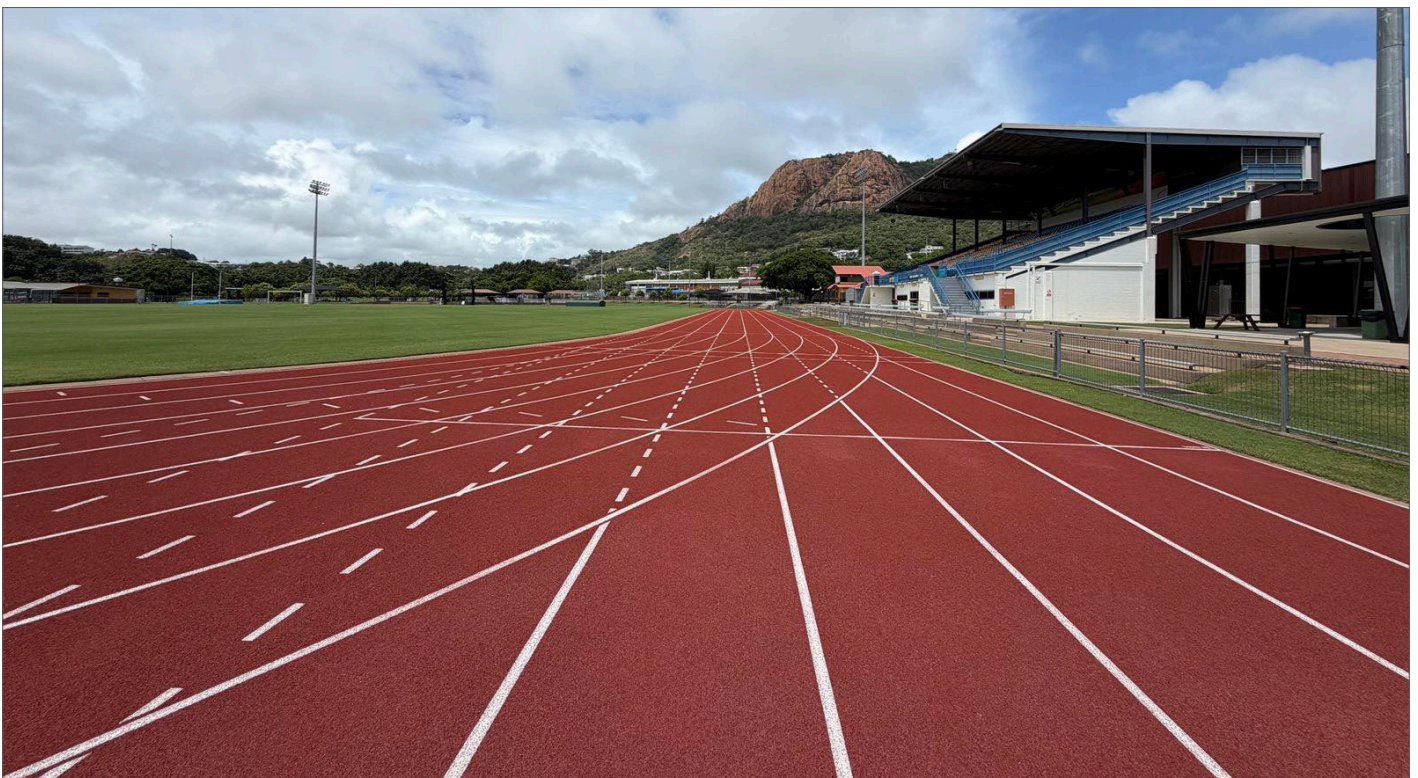
- ❑ The facility was re-surfaced in late-2024. Drainage upgrades were also undertaken as part of this project
- ❑ The facility is attractive and heavily used
- ❑ Facility managers are hoping to attract pre-Games athletics content

### Facility directions

- ❑ The nearest synthetic athletics facilities are at Barlow Park in Cairns (4hrs drive north) and at the Mackay Aquatic and Recreation Complex (4.5hrs drive south)
- ❑ Continue to maintain the athletics facility at the Townsville Sports Precinct to a high standard and undertake World Athletics re-certification as required (Ongoing)

### Council considerations

- ❑ Council is pleased with the manner in which the State Government is operating the Townsville Sports Precinct for the local athletics community
- ❑ There are no other synthetic athletics facilities being planned by Council (and no schools known to be considering synthetic athletics facility development)



# Mackay

## Existing key facility attributes

Mackay Regional Council site: Mackay Aquatic and Recreation Complex Athletics Facility

### Event facilities

- 8-lane 400m synthetic track (with 9-lane front straight, 8-lane back straight and steeplechase water jump)
- 2 double-ended synthetic LJ/TJ approaches
- 1 synthetic D
- 3 concrete shot put circles
- 2 concrete discus circles with cages
- 1 additional synthetic javelin approach
- venue is lit

### Ancillary facilities

- large storage shed
- raised clubhouse with canteen, amenities and social area
- sealed car parking

## Club considerations

MACKAY ATHLETICS CLUB

### Membership

- 138 members in 2025
- steady increases

### Facility usage

- Saturday PM competition
- Training held on two afternoons each week

### Facility directions

- the facility meets the needs of the Club well

North Mackay Athletics Club is based at Pioneer State High School (with occasional events held at the Mackay Aquatic and Recreation Complex Athletics Facility). The Club maintains a stable membership base of approximately 150, with weekly Sunday morning competitions and training on Tuesday and Thursday afternoons.



### School sport considerations

- ❑ The Capricornia Regional Trials and Mackay District Trials are both conducted at the Mackay Aquatic and Recreation Complex Athletics Facility
- ❑ The facility functions well for school athletics events

### Belgravia Leisure considerations

- ❑ Belgravia Leisure manage the facility - undertaking all bookings and liaising with facility users. Additionally, the organisation undertakes minor maintenance with more significant maintenance overseen by Council as the asset owner
- ❑ The facility is very popular hosting year-round uses (e.g. training squads), sport seasonal uses (e.g. Mackay Athletics Club) and a large number of school carnivals throughout Term 2. The facility also hosts occasional training for alternate sports when community fields are closed due to periods of wet weather

### Council considerations

- ❑ The facility is well used and the management arrangements with Belgravia Leisure work well
- ❑ Council is committed to maintaining the track in good condition (and renewing World Athletics certification when required) in order to attract high level athletics content (future Oceania Championships, pre-Games training etc)

### Facility directions

- ❑ The nearest synthetic athletics facilities are at the Townsville Sports Precinct (4.5hrs drive north) and at the Bundaberg Super Park (6.5hrs drive south). Once developed, the facility at the Central Queensland University site in Rockhampton would only be 3.5hrs drive south
- ❑ Continue to maintain the athletics facility at the Mackay Aquatic and Recreation Complex to a high standard and undertake World Athletics re-certification as required (Ongoing)



# Rockhampton

## Existing key facility attributes

Central Queensland University site

The existing athletics venue is an 8-lane grass facility.

In 2023, the (Council-led) Rockhampton Regional Sports Precinct Master Plan was adopted and includes relocation of athletics within the University campus. The proposed relocated venue is a purpose-built grass facility.

## Club considerations

CENTRAL QUEENSLAND ATHLETICS CLUB

### Membership

- 55 members in 2025
- steady

### Facility usage

- based at Central Queensland University Oval
- Saturday PM competition (and training)
- Wednesday and Friday PM training

### Facility directions

- construct a full synthetic facility at the Central Queensland University site (High Priority)

North Rockhampton Little Athletics is based at North Rockhampton State High School. The Club had 128 members in 2025, and competes on Sunday afternoons with training conducted on Friday afternoons.



## School sport considerations

- ❑ The Rockhampton District trials are hosted at North Rockhampton State High School
- ❑ Strong support for development of a synthetic facility within Rockhampton
- ❑ If additional synthetic facilities were developed in future years (e.g. in Rockhampton and Gladstone), they would host the relevant District Trial annually and the Regional Trials on-rotation

## Council considerations

- ❑ Component 1 development of the Regional Sports Precinct (court facility development) is fully funded
- ❑ Given the drive from the working group, Council has undertaken detailed design and sought costs for development of a synthetic athletics facility. This step is due for completion by early July 2026. A detailed business case will be prepared and (depending on the outcomes of the business case), opportunities to attract funding support will be considered
- ❑ Importantly, while the Master Plan indicates a future grass facility, Council fully appreciates the desire for a synthetic facility

## Facility directions

- ❑ The nearest synthetic athletics facilities are at the Mackay Aquatic and Recreation Complex (3.5hrs drive north) and the Bundaberg Super Park (3.5hrs drive south). Once developed, the facility in Gladstone would only be 1.5hrs drive south
- ❑ Undertake a detailed business case outlining an operational approach for the proposed synthetic athletics facility in Rockhampton (High Priority)
- ❑ Seek funding support for construction of a synthetic athletics facility at the Central Queensland University in Rockhampton (to World Athletics Class 2 certification) (High Priority)

## Synthetic athletics facility working group considerations

- ❑ A working group has been established to progress the project
- ❑ The group includes representation from the University, Council and all local clubs (Central Queensland Athletics Club, North Rockhampton Little Athletics Centre, Keppel Coast Athletics Club and Gracemere Little Athletics Centre)
- ❑ Both the Central Queensland Athletics Club and North Rockhampton Little Athletics Centre are keen to be based at the proposed synthetic facility. In fact, there may be scope for the clubs to combine and create a stronger club with increased membership and greater coaching numbers (and to provide a clear pathway for athletes)
- ❑ while the Keppel Coast Athletics Club and Gracemere Little Athletics Centre would remain at their current bases, individual and squad training sessions would be conducted at the synthetic facility on-occasion
- ❑ Given the travel distance of more than 350km north to the nearest synthetic facility in Mackay and 300km south to Bundaberg, development in Rockhampton is considered essential to ensure growth of the sport
- ❑ once the detailed design, costs and follow-up business case are complete, the working group will assist Council to seek funding support

## Livingstone

The Keppel Coast Athletics Club currently bases regular training and competition at Farnborough State School where the Club has developed an 8-lane grass 400m track, concrete throw circles and synthetic LJ/TJ approaches.

Given that Rockhampton is the service centre for the Yeppoon-Emu Park area, the development of a synthetic facility in Rockhampton would likely see training squads from the Keppel Coast Club undertake training at the new synthetic facility from time-to-time (yet remain members of the Keppel Coast Club).

## Facility directions

- ❑ Development of a synthetic athletics facility in the Livingstone LGA is not supported given plans for such a facility in Rockhampton.



# Gladstone

## Existing key facility attributes

Trinity College site

### Event facilities

- 8-lane 400m grass track
- 2 synthetic LJ/TJ approaches
- 2 concrete shot put circles
- 2 concrete discus circles with cages
- grass areas for javelin and high jump
- venue is not lit

### Ancillary facilities

- 2 storage sheds
- basic servery
- small amenities building
- sealed car parking
- spectator's grass hill and one shaded area with a sail

## Club considerations

GLADSTONE ATHLETICS CLUB

### Membership

- 220 members in 2025/26
- steady increases

### Facility usage

- Saturday AM competition
- Thursday PM training

### Facility directions

- replace the aged discus cage (High Priority)
- provide shaded areas at all event sites (High Priority)
- provide refrigerated water point (High Priority)
- construct a synthetic javelin approach (Medium Priority)
- construct a synthetic high jump approach (Medium Priority)
- install facility LED lighting (Medium Priority)
- construct an amenities and changeroom facility (Low Priority)
- construct a full synthetic facility at Trinity College (Low Priority)



### School sport considerations

- ❑ the Port Curtis District trials are hosted at the Trinity College facility
- ❑ the Capricornia Regional Trials are hosted at the synthetic athletics facility in Mackay. If additional synthetic facilities were developed in future years (e.g. in Rockhampton and Gladstone), they would host the relevant District Trial annually and the Regional Trials on-rotation



### Council considerations

- ❑ Council has limited available land (and funding) to support requests for new sport infrastructure development
- ❑ Council has encouraged the club to continue working with the College on long-term facility provision. (Chanel College may also be worthy of investigation if suitable arrangements at Trinity College cannot be agreed to)

### Facility directions

- ❑ The nearest synthetic athletics facilities are at the Mackay Aquatic and Recreation Complex (5hrs drive north) and the Bundaberg Super Park (2hrs drive south). Once developed, the facility in Rockhampton would only be 1.5hrs drive north
- ❑ Retain Trinity College as the preferred site for athletics facility development in Gladstone in the short- to medium-term
- ❑ If, as planned, Rockhampton attracts funding to develop a synthetic athletics facility, Gladstone-based athletes and coaches will have better access to synthetic facilities. This access will reduce any priority demand for synthetic facility development within Gladstone (without discounting demand in the longer-term if athletics continues to be popular in the Gladstone area)
- ❑ Undertake a Feasibility Study to determine the best location for development of a synthetic athletics facility in Gladstone in the longer-term (Low Priority)



# Bundaberg

## Existing key facility attributes

Bundaberg Regional Council site: Bundaberg Super Park

### Event facilities

- 8-lane 400m synthetic track
- 4 synthetic LJ/TJ approaches
- 2 synthetic HJ fans (with javelin approaches)
- 2 concrete shot put circles
- 2 concrete discus circles with cages
- venue is fully lit

### Ancillary facilities

- large storage sheds
- basic servery
- clubhouse incorporating canteen, amenities, social area, office and storage
- sealed car parking (and unsealed overflow areas)
- spectator mound along the front straight

## Club considerations

BUNDABERG ATHLETICS CLUB &  
WEST BUNDABERG Little Athletics CLUB

### Membership

- 216 members in 2025/26
- steady increases

### Facility usage

- Friday evening competition
- training available most afternoons/evenings

### Facility directions

- replace the synthetic surfaces (High Priority)
- construct shade (either sails or mature trees) along the front straight spectator mound (High Priority)



### School sport considerations

- ❑ The Wide Bay Regional Trial is held at the facility in Bundaberg (given it is the only synthetic venue in the Region)
- ❑ While the track and field event facilities meet the needs for this trial well, additional shaded spectator areas would be beneficial



### Council considerations

- ❑ Council recognises the need for complete synthetic surface replacement and provision of shade sails for athletes and spectators along the front straight, marshalling and finish line areas
- ❑ Funding will be sought in order to progress these projects in the short-term

### Facility directions

- ❑ The nearest synthetic athletics facilities are at the Mackay Aquatic and Recreation Complex (6.5hrs drive north) and the University of Sunshine Coast facility (3hrs drive south). Once developed, the facility in Rockhampton would only be 3hrs drive north, while the facility in Gladstone would only be 2hrs drive north
- ❑ Maintain the Bundaberg Super Park as the key athletics facility for the Region (Ongoing)
- ❑ Undertake full synthetic surface replacement at Bundaberg Super Park in the short-term (High Priority)
- ❑ Construct spectator shade along the front straight mound, marshalling and finish line areas at Bundaberg Super Park (High Priority)



# Fraser Coast

## Existing key facility attributes

There are two key council-managed community athletics venues with the Fraser Coast LGA - Hervey Bay Athletics Facility, Dundowran; and Jock Anderson Oval, Tinana. Both sites host opportunities in Little Athletics and athletics.

The two venues share a range of common facility attributes:

### Event facilities

- 400m grass track
- synthetic LJ/TJ approaches
- synthetic high jump approach
- 2 concrete shot put circles
- 2 concrete discus circles
- synthetic javelin approach (Hervey Bay)
- grass javelin approach (Maryborough)
- venues are lit

### Ancillary facilities

- large storage sheds
- clubhouse incorporating canteen
- amenities
- unsealed car parking.

An additional venue with basic facilities is located at the Bauple Recreation Grounds in Bauple (and hosts the Tiaro Little Athletics Centre).

## Club considerations

HERVEY BAY ATHLETICS CLUB

### Membership

- 110 members in 2025/26
- steady increases in Little Athletics

### Facility usage

- Friday evening competition
- Wednesday PM training

### Facility directions

- replace the amenities facility (High Priority)
- upgrade the canteen (High Priority)
- provide additional covered areas (High Priority)

MARYBOROUGH AMATEUR AND Little Athletics CLUB

### Membership

- 210 members in 2025/26
- steady increases in both athletics and Little Athletics

### Facility usage

- Friday evening competition
- Sunday PM training

### Facility directions

- construct a synthetic javelin approach (High Priority)



## School sport considerations

- ❑ The Wide Bay Regional Trial is held at the facility in Bundaberg (given it is the only synthetic venue in the Region)

## Council considerations

- ❑ The updated Fraser Coast Sports and Recreation Precinct Master Plan was approved in 2022. The Master Plan includes development of a quality grass athletics facility as a Stage 1 development. Conversion of the facility to a synthetic venue is noted as a potential future outcome subject to demand
- ❑ Given that construction of the Stage 1 outcomes is yet to commence, any potential for a synthetic athletics facility appears to be a long-term outcome

## Facility directions

- ❑ The nearest synthetic athletics facilities are at the Bundaberg Super Park (1.5hrs drive north) and the University of Sunshine Coast facility (2hrs drive south)
- ❑ Prepare a Fraser Coast Synthetic Athletics Facility Feasibility Study (Low Priority).



# Sunshine Coast

## Existing key facility attributes

University of Sunshine Coast site

### Event facilities

- 8-lane 400m (10-lane front straight) with steeplechase water jump and no back straight
- 1 synthetic 'D'
- 2 double-ended synthetic LJ/TJ approaches
- 4 shot put circles
- 2 discus circles with cages
- 1 additional synthetic javelin approach
- venue is fully lit

### Ancillary facilities

- multiple storage sheds and storage rooms
- clubhouse with canteen and amenities
- sealed car parking
- uncovered grandstand seating and spectators' hill

## Club considerations

UNIVERSITY OF SUNSHINE COAST ATHLETICS CLUB

### Membership

- 500 members in 2025/26
- significant increases

### Facility usage

- fortnightly competitions
- training available on most days

### Facility directions

- replace the synthetic surface (High Priority)
- construct a full synthetic 'D' at the southern end of the facility (High Priority)
- repair and upgrade the steeplechase water jump and steeples (High Priority)
- provide underground power inside the track (High Priority)

UNIVERSITY OF SUNSHINE COAST Little Athletics CENTRE

### Membership

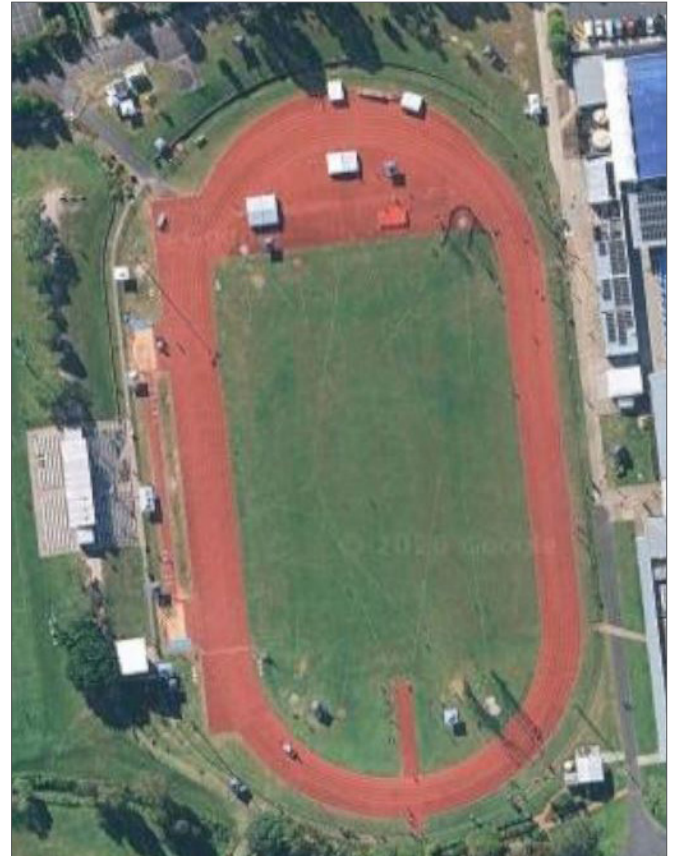
- 450 members in 2024/25
- between 350 and 450 depending on Olympic cycles

### Facility usage

- Friday night competitions
- Monday afternoon/early evening training

### Facility directions

- replace the synthetic surface (High Priority)
- construct a full synthetic 'D' at the southern end of the facility (High Priority)
- provide underground power inside the track (High Priority)
- provide shade over the grandstand (Medium Priority)



## School sport considerations

- ❑ The Sunshine Coast Regional Trial; Coastal District, Nambour District, North District and Independent District trials are all conducted at the University facility
- ❑ While the University facility needs full synthetic replacement, from a school sport perspective, this one facility is expected to continue to meet demand into the long-term

## Council considerations

- ❑ Council's Sport and Active Recreation Plan (2011-2026) does not include any athletics-specific actions - and there are no current plans for development of a community synthetic athletics facility
- ❑ The facility at the University of Sunshine Coast continues to service the community well
- ❑ Council is keen to attract 2032 Olympic and Paralympic pre-Games content (particularly where it results in quality community legacy outcomes)

## Facility directions

- ❑ The nearest synthetic athletics facilities are at the Bundaberg Super Park (1.5hrs drive north) and Nudgee College (1hrs drive south). Once developed, the facility at Petrie (City of Moreton Bay LGA) would only be 45mins drive south
- ❑ Maintain the University of Sunshine Coast athletics venue as the key facility for the Region (Ongoing)
- ❑ Undertake required works at the University of Sunshine Coast athletics facility:
  - full synthetic surface replacement and colour change (High Priority)
  - construct a full synthetic 'D' at the southern end of the facility (High Priority)
  - repair and upgrade the steeplechase water jump and steeples (High Priority)
  - provide underground power inside the track (High Priority)
  - construct external facility management fencing (High Priority)
  - incorporate accessible infrastructure to the clubhouse and amenities (High Priority)
  - replace long/triple jump drop-in boards (High Priority)
  - provide shade over the grandstand (Medium Priority)

## Noosa

The Noosa Athletics Club is based at the Girraween Sports Complex with training provided every day of the week and competition undertaken on Friday evenings.

The facility is a quality 9-lane grass 400m track, with synthetic LJ/TJ approaches, discus circle with cage and multiple shot put circles. A large raised clubhouse (shared with football) overlooks the facility.

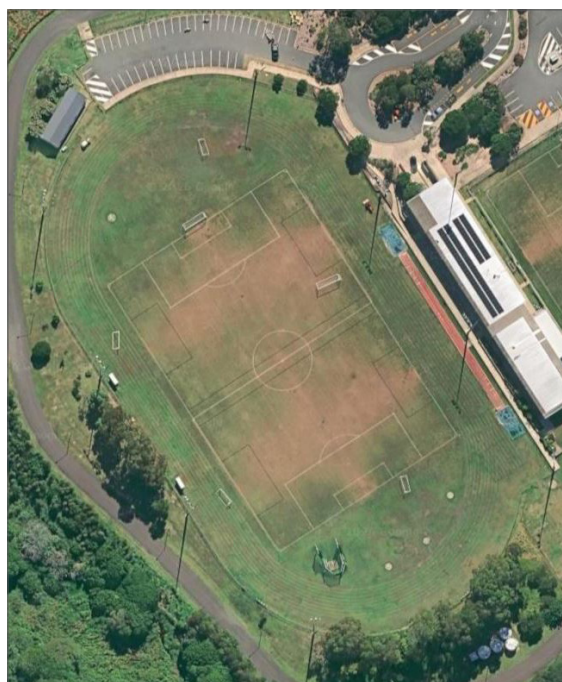
There have been discussions by the Club concerning appetite for full synthetic athletics facility development for a number of years. While Council does not view this as a short-term priority, with further planning, there may be scope for such development in the long-term. If it was to proceed, it is likely that the Girraween Sports Complex would be the preferred venue for future athletics facility development.

## Facility directions

- ❑ Prepare a Noosa Synthetic Athletics Facility Feasibility Study (Low Priority)

## University of the Sunshine Coast (UniSC)

- ❑ UniSC plans to upgrade the athletics facility within the next few years. Timing of this will be based on contractor availability and available grant funding
- ❑ The colour of the re-surfaced facility will change from maroon to blue
- ❑ Each of the facility requirements identified by the Athletics and Little Athletics groups is supported by UniSC. Additional facility upgrades include:
  - external fencing (High Priority)
  - accessible infrastructure to the clubhouse and amenities (High Priority)
  - long/triple jump drop-in boards (High Priority)



# Moreton Bay

## Existing key facility attributes

There are a range of venues hosting athletics and Little Athletics training and competitions across the City of Moreton Bay LGA. Quality grass facilities are located at Arana Hills, Bribie Island, Caboolture, Deception Bay, Redcliffe, Strathpine and Wamuran. There is no full synthetic athletics facility within the LGA.

## School sport considerations

Schools within the City of Moreton Bay are split between two school sport regions - Metropolitan North and Sunshine Coast. The Metropolitan North Regional Trial is conducted at QSAC while the four District Trials involving schools from the City of Moreton Bay are all conducted at the synthetic facility at Nudgee College.

The Sunshine Coast Regional trials are conducted at the University of Sunshine Coast facility while the three District Trials with schools from the City of Moreton Bay are all conducted at the grass Wolfenden Oval facility at Caboolture.

A quality synthetic facility located centrally within the LGA would attract a number of District Trials (and many individual school carnivals).

## Council considerations

Demand for a synthetic athletics facility has been identified by Council. The Mill at Petrie has been highlighted as the preferred site with construction expected in the medium-term. This site offers access to public transport, is near to the University of Sunshine Coast (Moreton Bay) and the Moreton Bay Indoor Sports Centre set to be developed as a Brisbane 2032 Olympic and Paralympic Games community legacy.

Council will consider preferred tenure arrangements as planning for the facility progresses.

## Facility directions

- The proposed facility at Petrie would be 30mins drive north of Nudgee College
- Council is committed to developing a synthetic athletics facility within the LGA
- Support development of a synthetic athletics facility at The Mill (Petrie) (Medium Priority)



*Wolfenden Oval - home of Caboolture Athletics and Little Athletics*



*Leslie Patrick Park - home of Arana Little Athletics*



*Zammit Oval - home of Deception Bay Athletics and Little Athletics*

## Redland

### Existing key facility attributes

Community athletics in Redland is currently provided by clubs based at Sheldon College. This facility includes:

- 8-lane 400m track (with steeplechase water jump)
- 2 reduced size synthetic 'Ds'
- 3 single-ended synthetic LJ/TJ approaches
- 2 shot put circles
- 1 discus circle with cage (and 1 without cage on an adjoining field)
- all track and field facilities are lit.

Ormiston College also has a synthetic athletics facility (although community use of this facility is limited). The facility includes:

- 8-lane 400m track (with 10-lane straight) with steeplechase water jump and back straight
- 2 synthetic 'Ds'
- 2 double-ended synthetic LJ/TJ approaches
- 2 shot put circles
- 2 discus circles with cages
- large covered grandstand
- facility is not lit.

### Club considerations

REDLANDS Little Athletics CENTRE

#### Membership

- 325 members in 2024/25
- significant increases

#### Facility usage

- Saturday afternoon competitions at Sheldon College

#### Facility directions

- the facility meets the needs of the Centre well

### School sport considerations

- The newly established Redlands Roos School Sport District will host its athletics trials at OSAC in 2026
- The Metropolitan East Regional Trials are also conducted at OSAC

### Council considerations

There are no Council-managed athletics facilities within the Redland LGA. With synthetic facilities available at two private schools, Council has no plans for future athletics facility development.

### Facility directions

- With existing facilities at two private schools, and local clubs well-established at Sheldon College, there appears little demand for future athletics facility development within the Redland LGA



# Brisbane

## Existing facilities

There are a number of quality synthetic athletics venues across Brisbane:

- University of Queensland (St Lucia)
  - 8-lane 400m with steeplechase water jump and no back straight
  - 4-lane 50m synthetic training area
  - 1 external synthetic 'D'
  - 2 double-ended synthetic LJ/TJ approaches (and additional pole vault approach)
  - 2 shot put circles
  - 1 discus circle with cage
  - venue is fully lit
  - covered grandstand, storage, office and canteen
- Nudgee College
  - 9-lane 400m with steeplechase water jump and 110m back straight
  - 1 synthetic 'D'
  - 2 double-ended synthetic LJ/TJ approaches
  - 1 single-ended synthetic LJ/TJ approach
  - 4 shot put circles
  - 2 discus circles with cages (1 on an adjoining field)
  - venue is fully lit
  - photofinish and administration room, storage and adjoining conference centre
- QSAC - Main Stadium
  - 10-lane 400m with steeplechase water jump and full 110m back straight
  - 2 synthetic 'Ds'
  - 4 double-ended synthetic LJ/TJ approaches
  - 5 shot put circles
  - 2 discus circles with cages (1 suitable for hammer)
  - venue is fully lit
  - total of 48,500 seating capacity (across the main western grandstand, uncovered northern and southern grandstands and covered eastern grandstand)
  - large on-site storage sheds
- QSAC - State Athletics Facility
  - 10-lane 400m with steeplechase water jump and full 110m back straight
  - 2 synthetic 'Ds'
  - 2 double-ended synthetic LJ/TJ approaches
  - 2 shot put circles
  - 2 discus circles with cages (1 suitable for hammer)
  - venue is fully lit
  - administration building, officials' room and canteen
  - large amenities building
  - storage sheds
  - 2,100 seat capacity covered grandstand
- QSAC - additional facilities of-note
  - National Throws Centre
  - Queensland Academy of Sport Recovery Centre, gymnasium and administration



## Club considerations

While in more regional areas, athletics clubs tend to be based at a particular facility, within Brisbane (and South East Queensland more generally) athletes travel to train with coaches at whatever venue the coach is established at. Most coaches will work with athletes representing various clubs at the same time.

Given direct access to a synthetic facility, the University of Queensland and Nudgee College Athletics Clubs are more formally aligned to a venue than other Brisbane-based clubs tend to be.

### UNIVERSITY OF QUEENSLAND ATHLETICS CLUB

#### Membership

- 290 members in 2024/25
- steady membership base

#### Facility usage

- training available five days each week
- up to 4 meets are hosted by the Club each year

#### Facility directions

- replacement of the synthetic surface as it nears end-of-life (Medium Priority)
- consideration of infrastructure upgrades to ensure the facility can host competition and training across all events:
  - expand the pole vault landing mat bases to meet World Athletics specifications (Medium Priority)
  - replace the existing discus cage with a World Athletics certified discus/hammer cage (Medium Priority)

### NUDGEE COLLEGE ATHLETICS CLUB

#### Membership

- 40 members in 2024/25
- steady membership base

#### Facility usage

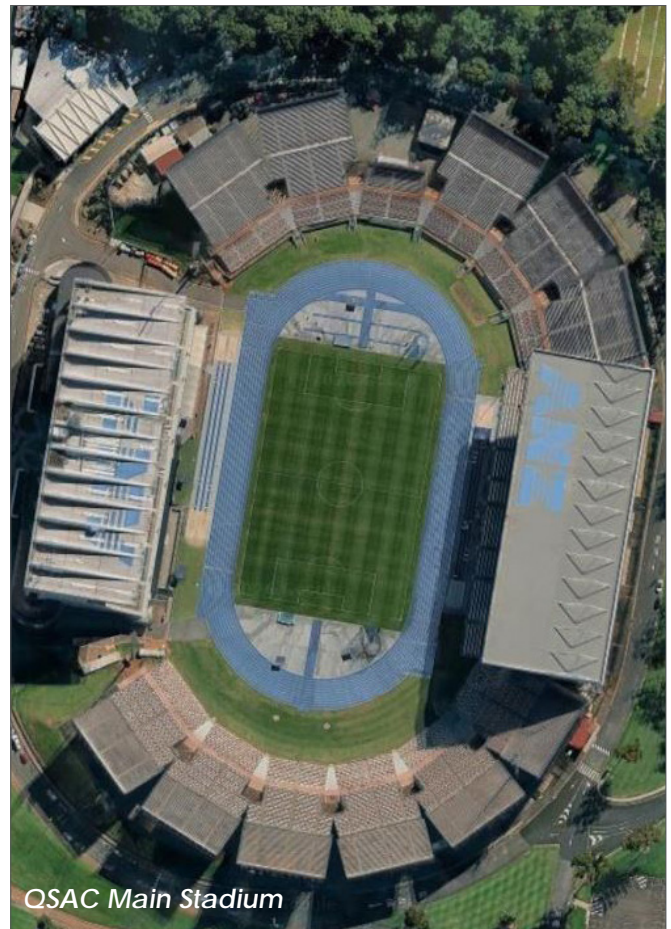
- training available through club and private coaches throughout the year

#### Facility directions

- replace the synthetic surface as it nears end-of-life (Medium Priority)

## School sport considerations

- The Metropolitan East Regional Trials and all five District Trials are conducted at QSAC
- The Metropolitan West Regional Trials and three District Trials are conducted at QSAC, with two District Trials also conducted at the University of Queensland
- The Metropolitan North Regional Trials are conducted at QSAC, while all six District Trials are conducted at Nudgee College



QSAC Main Stadium



QSAC State Athletics Facility

## Brisbane (cont.)

### QSAC considerations

- ❑ The Queensland Sport and Athletics Centre (QSAC) is the premier athletics facility in Queensland
- ❑ The venue is home to the Queensland Academy of Sport, Queensland Athletics, Little Athletics Queensland, Softball Queensland, Special Olympics Queensland, Sandstorm and Netball Queensland
- ❑ A master planning process is currently being undertaken to elevate the venue to become Australia's premier athletics venue and Queensland's home of high-performance sport to foster the development of Olympic and Paralympic champions for Brisbane 2032 and beyond. Desire is for fit-for-purpose facilities that are:
  - modern, inclusive and drive best practice
  - capable of hosting all levels of events from local school carnivals to world class content (particularly with a view to Brisbane hosting more regular high-level athletics events in the lead-in to and after the 2032 Olympic and Paralympic Games)
  - designed and constructed to provide Queensland with a long-term quality athletics venue legacy

### UQ Sport considerations

- ❑ The synthetic surface at the UQ Athletics Centre was re-laid in 2023
- ❑ The plan is to replace the synthetic surface as it approaches end-of-life but undertaken at a time that will allow the facility to be quite new and attractive for potential pre-Games content

### Nudgee College considerations

- ❑ The College is currently undertaking a facility master plan that will direct future resources
- ❑ The College is keen to attract pre-Games content. As such, the synthetic surfaces will be replaced nearer to the Games (likely in 2029 or 2030) to ensure the facility is attractive
- ❑ Potential upgrade of field lighting will depend on the outcomes of a separate cost-benefit analysis

### Council considerations

- ❑ From a sport planning and delivery perspective, Council focuses its efforts on meeting demand for grassroots participation. For the sport of athletics, this tends to mean providing and upgrading grass facilities to meet the needs of local clubs and Little Athletics centres
- ❑ Council highlights that the provision of synthetic athletics facilities is not likely to be one of its core considerations for the foreseeable future



## Facility directions

- ❑ Complete the QSAC master planning process and seek funding and support to enable necessary infrastructure upgrades (High Priority)
- ❑ Support the University of Queensland to upgrade the existing facility to World Athletics Class 2 specifications for all events (Medium Priority)
- ❑ Support Nudgee College to replace the synthetic surface and retain the site as a key community asset (Medium Priority)



## Additional facility considerations

- ❑ It is recognised that there are many grassroots athletics facilities spread across the Brisbane LGA providing opportunities in school athletics, Little Athletics and (to a lesser extent) athletics
- ❑ While this State Facilities Plan for Athletics is focused on higher-order synthetic facilities, the LAQ State Facilities Plan provides facility directions for the facilities hosting Little Athletics
- ❑ Interestingly, despite being a grassroots community facility, the Toowong Harriers are developing a master plan for their site at Jack Cooke Memorial Park that includes facility upgrades such that the venue may be attractive as a training base pre-Games. Potential facility upgrades include:
  - development of a 6-lane 60m synthetic training area
  - development of two full synthetic ‘Ds’
  - synthetic approach long jump/triple jump re-construction
  - tiered terrace spectator seating around the facility
  - new clubhouse development.

Given that the State Facilities Plan is primarily concerned with full synthetic athletics facilities, these proposed upgrades have not been included in the Action Plan. However, this does not diminish their importance to the Toowong Harriers and local athletics community.



# Logan

## Existing key facility attributes

Community athletics in Logan is currently provided by clubs based at Jimboomba, Springwood, Beenleigh and Browns Plains. All of these facilities include grass tracks with synthetic LJ/TJ approaches.

The only synthetic athletics facility located within the Logan City Council LGA is at Canterbury College (Waterford). This facility includes a 6-lane 400m track (with 8-lane straight), single synthetic 'D', two double-ended synthetic LJ/TJ approaches, single discus circle with cage and two shot put circles. The facility is largely used for school activities and Canterbury Taipans Athletics Club training. It is not considered a community-accessible venue.

## School sport considerations

Schools within Logan City Council are split between two school sport regions - South Coast (Pacific District) and Metropolitan East (Southside Sea Eagles District). The Gold Coast Performance Centre hosts both the Pacific District and South Coast Regional Trials, while QSAC hosts both the Southside Sea Eagles District and Metropolitan East Regional Trials.

For a potential new facility in Logan to be attractive to host district-level school events, significant spectator facilities would be required (in addition to the traditional track and field event facilities)

## Council considerations

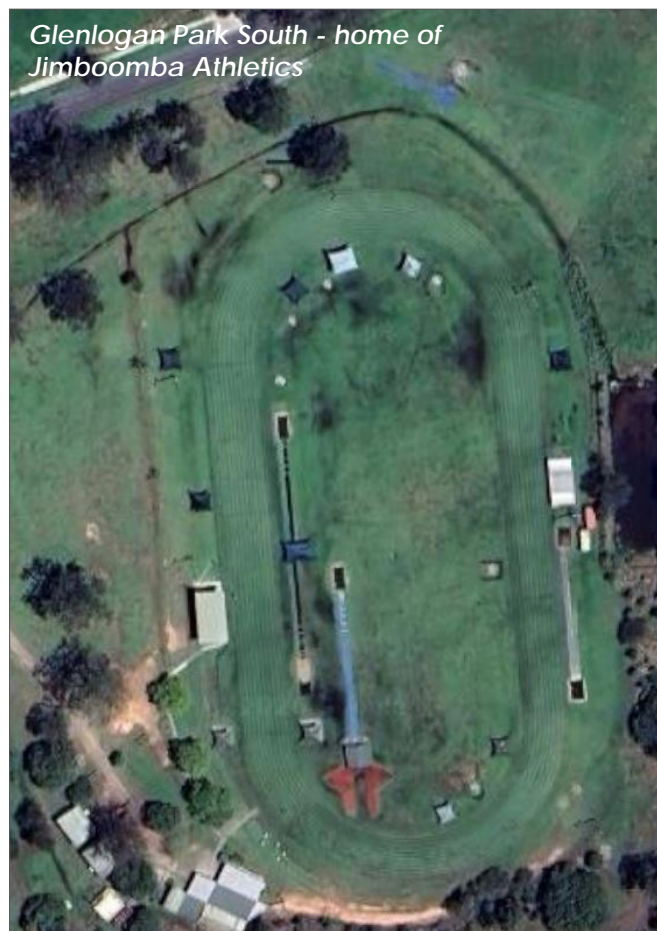
The provision of sport facilities in Logan City Council is led by the Sports Infrastructure Plan 2024-2041<sup>1</sup>.

The Plan identifies demand for a synthetic athletics facility to be developed within one of the Priority Development Areas within the south-east of the City in the short- to medium-term.

A head tenant for the future synthetic athletics facility will be determined once a preferred location is approved.

## Facility directions

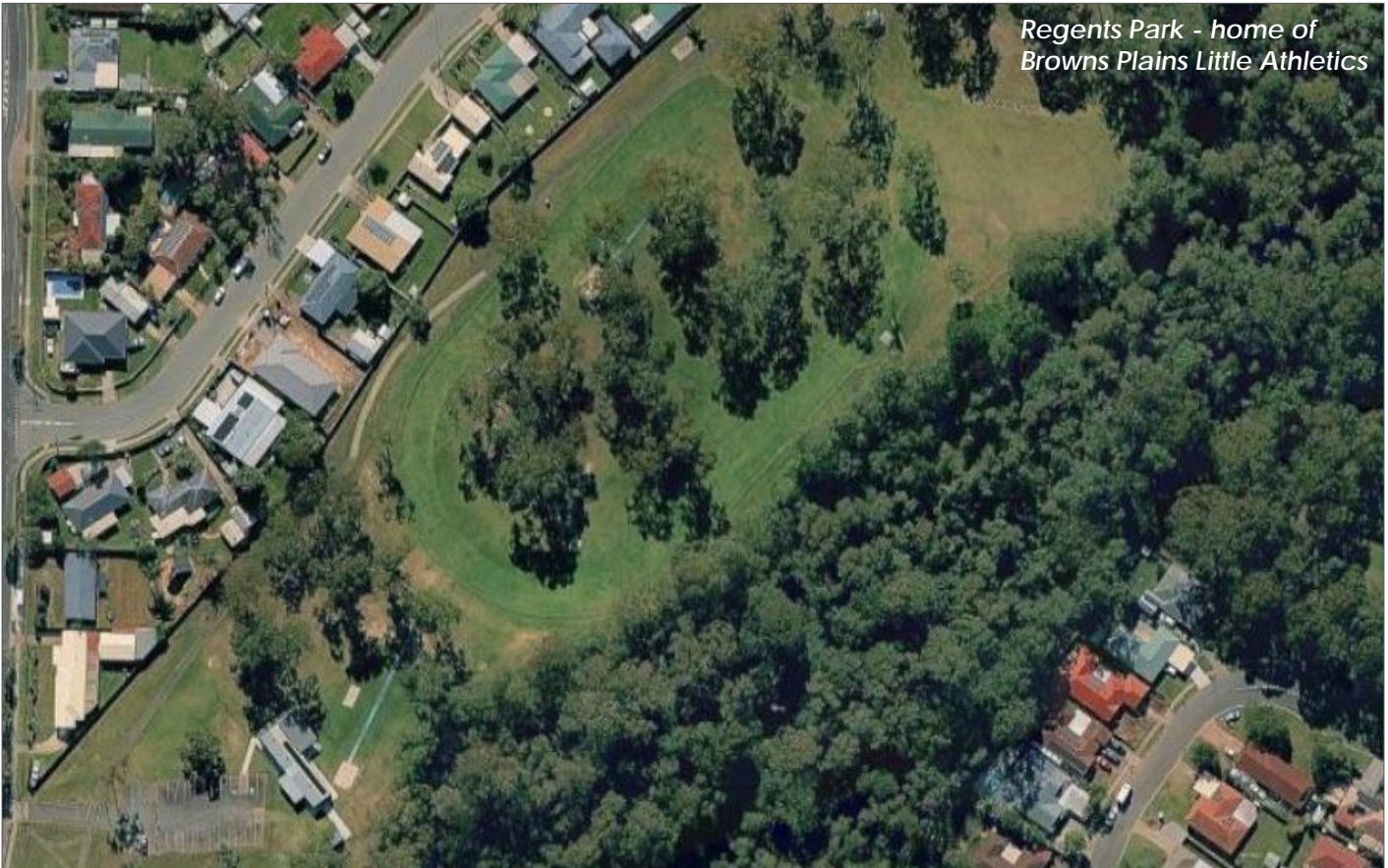
- ❑ Logan Central is approximately 30mins drive south of the two facilities at QSAC and 45mins drive north of the Gold Coast Performance Centre (Runaway Bay). Once developed, the facility in Ipswich would be 45mins drive west of Logan Central
- ❑ Council is committed to developing a synthetic athletics facility within the LGA
- ❑ Support development of a synthetic athletics facility that is well-located within an area of residential growth in the south-east of the City (Medium Priority)



<sup>1</sup> Otium Planning Group, 2024



*Oliver Sports Complex - home of Beenleigh Little Athletics*



*Regents Park - home of Browns Plains Little Athletics*

# Gold Coast

## Existing facilities

There are a number of quality athletics venues across the Gold Coast:

- ❑ Griffith University (Gold Coast)
  - 8-lane 400m track (with 9-lane front straight and 100m back straight) and steeplechase water jump
  - 1 synthetic 'D'
  - 2 double-ended synthetic LJ/TJ approaches
  - 2 single-ended synthetic LJ/TJ approaches (also used as pole vault approaches)
  - 2 shot put circles
  - 2 discus circles with cages
  - 1 additional synthetic javelin approach
  - covered grandstand, storage, office and canteen
- ❑ Gold Coast Performance Centre
  - 8-lane 400m track (with 10-lane straight) and steeplechase water jump
  - 2 synthetic 'Ds'
  - 2 double-ended synthetic LJ/TJ approaches
  - 2 shot put circles
  - 2 discus circles with cages
- ❑ Somerset College
  - 10-lane 400m track (with 100m back straight) and steeplechase water jump
  - 1 synthetic 'D'
  - 2 double-ended synthetic LJ/TJ approaches
  - 2 shot put circles
  - 2 discus circles with cages
  - canteen and administration building

While the Griffith University and Gold Coast Performance Centre are available for community use, the Somerset College facility is generally only available for Ignition Athletics Club training and infrequent school carnivals.

A quality grass athletics facility is also located at Pizzey Park that includes a 9-lane 400m track, 3 double-ended synthetic LJ/TJ approaches, 3 shot put circles and 2 discus circles with cages. The facility is home to the Gold Coast Athletics and Little Athletics Clubs and hosts regular community training and carnivals.

## Club considerations

GOLD COAST ATHLETICS (AND Little Athletics) CLUB

### Membership

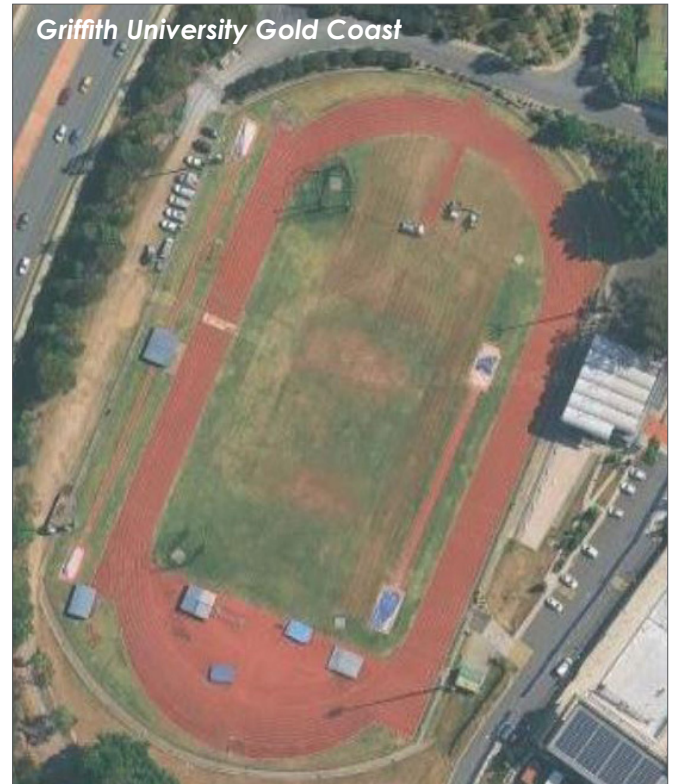
- ❑ 460 members combined in 2025/26
- ❑ steady increases

### Facility usage

- ❑ Friday evening competition
- ❑ training available most afternoons/evenings

### Facility directions

- ❑ construct a full synthetic athletics facility and shared clubhouse (High Priority)



## School sport considerations

- ❑ The South Coast Regional Trial is hosted at the Gold Coast Performance Centre. Three of the four District Trials are also conducted at the Performance Centre, with the Hinterland District Trial conducted at Somerset College
- ❑ The planned facility at Pizze Park would be highly attractive as a preferred venue for the Broadwater District Trial and also a range of individual school carnivals

## Council considerations

- ❑ Council is fully committed to developing a quality synthetic athletics facility in Pizze Park in the short-term (with construction expected to be complete by late-2027)
- ❑ The facility will include an 8-lane 400m track (with 10-lane front and back straights and steeplechase water jump), 2 synthetic 'Ds', 2 double-ended LJ/TJ approaches, 2 shot put circles and 2 discus circles with cages (1 suitable for hammer)
- ❑ The facility will also include a new shared clubhouse
- ❑ Importantly, the venue will continue to be available for public use and for event hire

## Gold Coast Performance Centre considerations

- ❑ The synthetic surface was re-laid in 2025. So the facility is in very good condition
- ❑ While the site attracts many school carnivals, it is not heavily used as a squad training base

## Facility directions

- ❑ Pizze Park is approximately 30mins drive south of the Griffith University Gold Coast athletics facility
- ❑ Support the development of a full synthetic facility at Pizze Park (High Priority)
- ❑ Support Griffith University upgrade the existing facility to World Athletics Class 2 specifications and retain as a key community asset through strategic partnerships with key user groups (High Priority)



## Griffith University Gold Coast considerations

- ❑ The synthetic surface at the facility is currently in poor condition (and due for replacement)
- ❑ The University has re-committed to retaining (and upgrading) the athletics facility as a key community asset. As such, funding is being sought for a range of infrastructure upgrades including: synthetic replacement (to World Athletics Class 2 specifications); lighting upgrades; PA system upgrades; provision of a storage facility; and fencing



# Ipswich

## Existing key facility attributes

Ipswich City Council site: Bill Paterson Oval

### Event facilities

- 8-lane 400m grass track with 9-lane straight (in poor condition)
- 2 synthetic LJ/TJ approaches (in poor condition)
- 3 concrete shot put circles
- Concrete discus circle (with cage)
- grass areas for javelin and high jump
- venue is fully lit (although lighting levels are not suitable for photofinish requirements)

### Ancillary facilities

- large building that incorporates storage, office, canteen and amenities and
- photofinish building with recording room on lower level
- sealed car parking
- spectator hill

## Club considerations

IPSWICH ATHLETICS CLUB

### Membership

- 225 members in 2025/26
- membership is steady

### Facility usage

- training available across 7 days

### Facility directions

- construct a synthetic 'home' for athletics in Ipswich (High priority)

IPSWICH Little Athletics CENTRE

### Membership

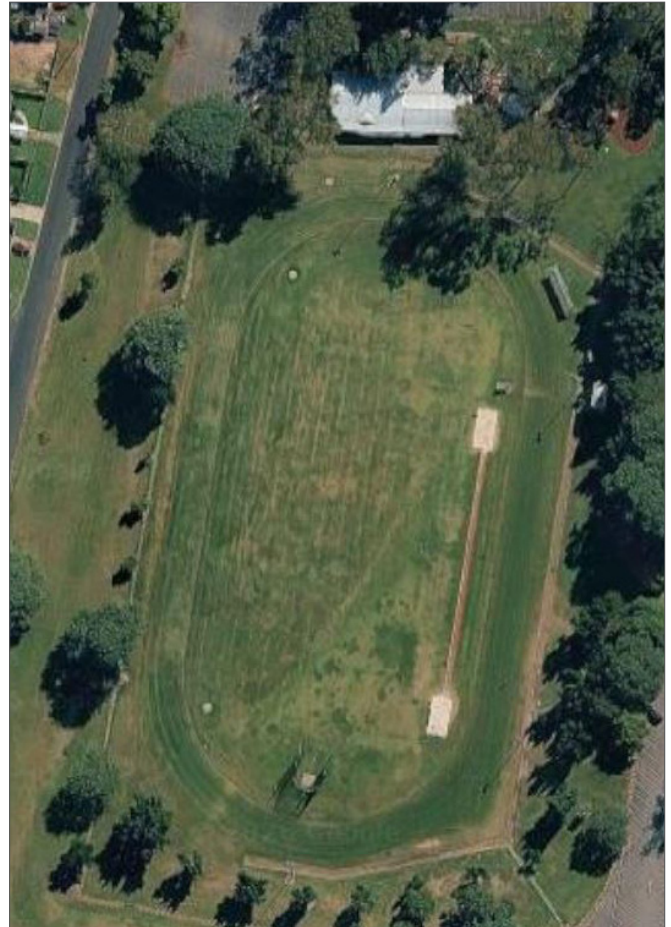
- 449 members in 2025/26
- membership was increasing before a sharp decline in the most recent season

### Facility usage

- Friday evening competition
- Tuesday and Thursday PM training

### Facility directions

- immediate need for a suitable grass track but high priority for a synthetic 'home' for athletics in Ipswich



## School sport considerations

- ❑ While the Metropolitan West primary and secondary school trials will continue to be held at QSAC moving forward, opportunity exists for district trials to be hosted in Ipswich
- ❑ The trials for Central District (largely Ipswich-based) and Western Ranges District (including areas such as Boonah, the eastern side of the Lockyer Valley and sections of Ipswich) are both currently hosted at QSAC or UQ, despite none of the competing schools being located near to these synthetic facilities
- ❑ Preference is for a synthetic athletics facility to be available in Ipswich to host these two district trials

## Council considerations

- ❑ In addition to being the home for the Athletics and Little Athletics Clubs and hosting large athletics training loads, Bill Paterson Oval also hosted more than 20 school athletics events throughout 2025
- ❑ Recent planning activities have identified that, as a former landfill site, the Oval requires significant remediation to continue to be suitable for a grass athletics facility. Additionally, Council is keen to develop a synthetic facility within the LGA - and the underlying ground conditions at Bill Paterson Oval mean that this is not a suitable site
- ❑ Council is currently undertaking a Feasibility Study to identify a preferred location for synthetic athletics facility development. Given continued population increases, expanding local interest in athletics and potential for 2032 Olympics- and Paralympics-related content to be attracted to Ipswich, development of a synthetic facility is viewed as a short-term priority

## Facility directions

- ❑ Ipswich Central is approximately 40mins drive west of the University of Queensland and QSAC facilities. Once developed, the facility at the University of Southern Queensland in Toowoomba would be 1.25hrs drive west of Ipswich Central
- ❑ Seek funding support to construct a full synthetic athletics facility to World Athletics Class 2 specifications in Ipswich (High Priority)



## Toowoomba (and the Darling Downs)

### Existing key facility attributes

Toowoomba Regional Council site (O'Quinn Street Park):

#### Event facilities

- 8-lane 400m grass track
- 2 synthetic LJ/TJ approaches
- 2 concrete shot put circles
- 2 concrete discus circles (with cages)
- grass areas for javelin and high jump
- venue is lit (however, the shot put and eastern discus sectors are not lit)

#### Ancillary facilities

- clubhouse incorporating canteen, storage and amenities
- sealed car parking and nearby overflow parking (on vacant land)
- two shelters overlooking the LJ/TJ pits and aluminium bench seating along the front straight
- storage shed located at the finish line (also used as shelter for officials)
- additional storage shed

An 8-lane 360m synthetic facility is also located at The Glennie School. However, community access to this facility is limited.



### Club considerations

DARLING DOWNS ATHLETICS CLUB

#### Membership

- 132 members in 2025/26
- small yearly increases

#### Facility usage

- training at various sites across Toowoomba and Highfields
- O'Quinn Street Park now rarely used given the poor condition of facilities

#### Facility directions

- develop a community synthetic athletics facility (High Priority)

TOOWOOMBA Little Athletics CLUB

#### Membership

- 322 members in 2025/26
- significant increases in recent years

#### Facility usage

- Sunday afternoon competitions
- very occasional training

#### Facility directions

- develop a community synthetic athletics facility (High Priority)

### School sport considerations

- ❑ One day (of the two-day) Darling Downs Regional Trials, the Inner Downs and three Toowoomba Zones Trials are all conducted at the O'Quinn Street Park facility
- ❑ The Regional and Zone events currently hosted at O'Quinn Street would all be transferred to a new synthetic facility. Additionally, it is expected that a number of local schools would also hire the facility for their school carnivals

### Council considerations

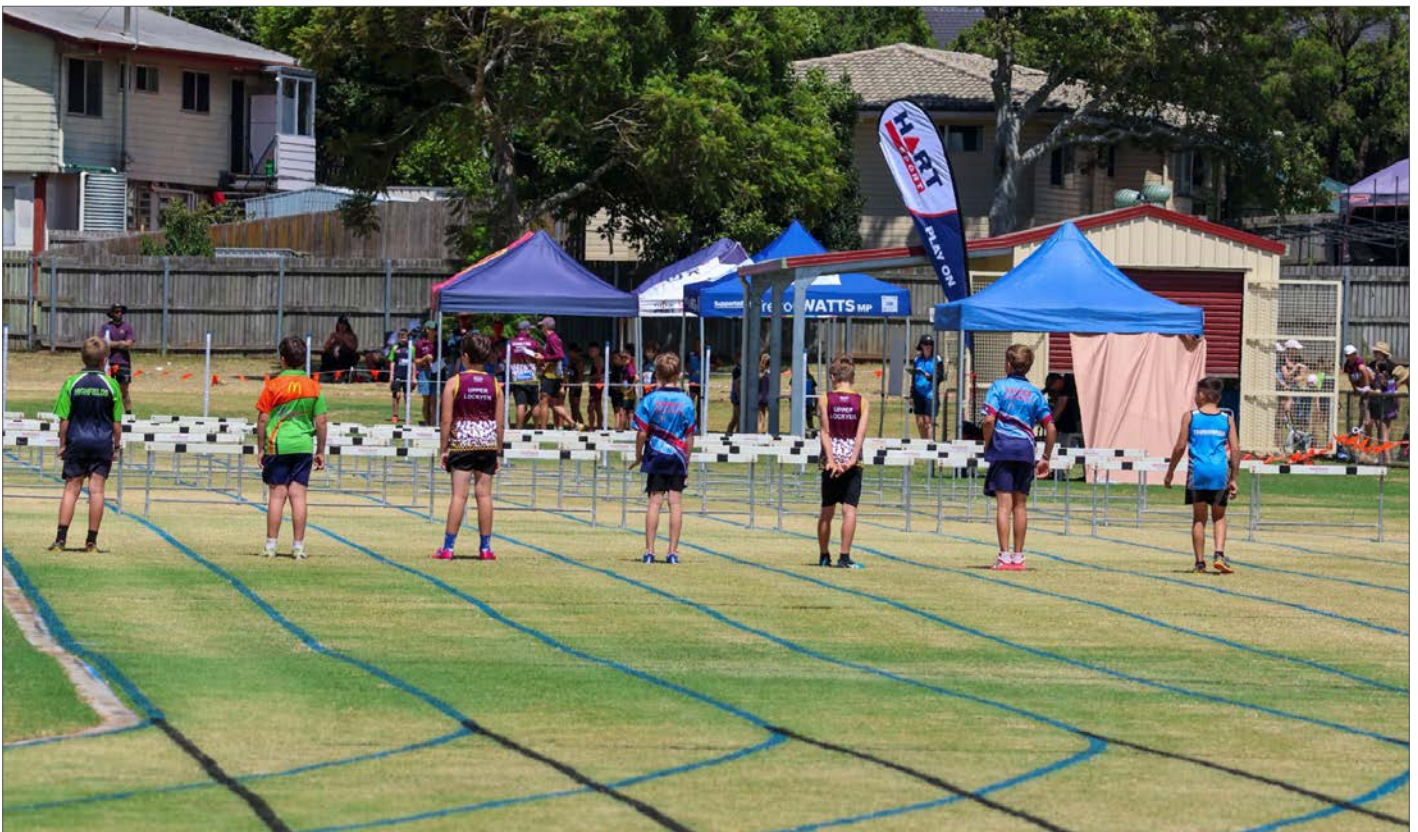
- ❑ Council recognises demand for a synthetic athletics facility in Toowoomba. Indeed, the Toowoomba Region Sports Precinct Master Plan (updated and adopted by Council in 2025), includes a synthetic athletics facility as a key component
- ❑ The State Government's recent funding support of planning initiatives for development of a synthetic athletics facility at the University of Southern Queensland campus, will see Council re-consider the delivery of athletics at both O'Quinn Street Park and the proposed Sports Precinct. Importantly, Council only supports development of one synthetic athletics facility in the City

### Facility directions

- ❑ The athletics facilities at QSAC and the University of Queensland are each approximately 1.5hrs drive east of Toowoomba. Once developed, the proposed facility in Ipswich would be a 1hr drive east of Toowoomba
- ❑ Support the development of a full synthetic athletics facility at the University of Southern Queensland in Toowoomba to World Athletics Class 2 specification (High Priority)

### University of Southern Queensland considerations

- ❑ The State Government has allocated funds to the University to undertake due diligence (feasibility study and design) for development of a synthetic athletics facility at the University campus (these planning works are due for completion by the end of 2026)
- ❑ The Feasibility Study and design will identify the preferred location and the necessary event and ancillary facility inclusions
- ❑ Ultimately, the facility will be made accessible to the local athletics community



## Additional athletics facility provision considerations

### Smaller population bases

This Plan has focussed on the provision of synthetic athletics facilities - acknowledging that these resource-intensive venues cannot sustainably be delivered in every location currently providing community athletics opportunities. However, it is recognised that locations as remote as Longreach, Charleville and Chinchilla all have strong clubs and that school athletics carnivals are conducted across the length and breadth of the State.

While locations with smaller populations do not require a synthetic athletics facility, provision of quality grass facilities (preferably with synthetic approaches for jumps and javelin) should be the target for facility providers.

### Community grass facilities

The LAO State Facilities Plan provides a detailed list (with prioritised facility upgrade requirements) for all Little Athletics venues across the State. This document should be used to guide development aspirations at these venues - and be considered giving regard to the prioritised facility development Action Plan presented in this State Facilities Plan. Ultimately, the two documents should work hand-in-hand to ensure a sustainable network of grass and synthetic athletics facilities are available across the State. Additionally, it is recognised that there are a range of school-based athletics facilities that do not currently host athletics or Little Athletics opportunities but provide for school carnivals and may provide for local training options.



Griffith University Gold Coast



Bundaberg Super Park





# 4

## Action plan

Project staging will ultimately be dependent on many factors such as detailed design outcomes, relevant approvals, cost estimate refinement, development stages and procurement scheduling. The cost of implementation of the Action Plan is beyond all levels of Government and the community's ability to fund in the short-term. Thus, this section provides a prioritised approach to facility development. The information provided is designed as a flexible guide - changes in user priorities or earlier opportunities for funding may alter staging.

These recommendations do not commit any level of Government, facility managers or tenants to their implementation. However, the State Facilities Plan does support organisations to seek grant funding and other investment opportunities.

LOCATION (LGA)	FACILITY	ACTION	PRIORITY
Cairns	Barlow Park	<input type="checkbox"/> Support continued upgrades at Barlow Park (with athletics remaining as a key tenant)	Ongoing
Townsville	Townsville Sports Precinct	<input type="checkbox"/> Continue to maintain the athletics facility at the Townsville Sports Precinct to a high standard and undertake World Athletics re-certification as required	Ongoing
Mackay	Mackay Aquatic and Recreation Complex	<input type="checkbox"/> Continue to maintain the athletics facility at the Mackay Aquatic and Recreation Complex to a high standard and undertake World Athletics re-certification as required	Ongoing
Livingstone		No demand for a synthetic athletics facility	
Rockhampton	Central Queensland University	<input type="checkbox"/> Undertake a detailed business case outlining an operational approach for the proposed synthetic athletics facility in Rockhampton <input type="checkbox"/> Seek funding support for construction of a synthetic athletics facility at the Central Queensland University in Rockhampton (to World Athletics Class 2 certification)	High High
Gladstone	Unconfirmed site	<input type="checkbox"/> Undertake a Feasibility Study to determine the best location for development of a synthetic athletics facility in Gladstone in the longer-term	Low
Bundaberg	Bundaberg Super Park	<input type="checkbox"/> Undertake full synthetic surface replacement at Bundaberg Super Park <input type="checkbox"/> Construct spectator shade along the front straight mound, marshalling and finish line areas at Bundaberg Super Park	High High
Fraser Coast	Fraser Coast Sports and Recreation Precinct	<input type="checkbox"/> Prepare a Fraser Coast Synthetic Athletics Facility Feasibility Study	Low
Noosa	Unconfirmed site	<input type="checkbox"/> Prepare a Noosa Synthetic Athletics Facility Feasibility Study	Low

LOCATION (LGA)	FACILITY	ACTION	PRIORITY
Sunshine Coast	University of the Sunshine Coast	<input type="checkbox"/> Undertake full synthetic surface replacement and colour change	High
		<input type="checkbox"/> Construct a full synthetic 'D' at the southern end of the facility	High
		<input type="checkbox"/> Repair and upgrade the steeplechase water jump and steeples	High
		<input type="checkbox"/> Provide underground power inside the track	High
		<input type="checkbox"/> Construct external facility management fencing	High
		<input type="checkbox"/> Incorporate accessible infrastructure to the clubhouse and amenities	High
		<input type="checkbox"/> Replace long/triple jump drop-in boards	High
		<input type="checkbox"/> Provide shade over the grandstand	Medium
Moreton Bay	The Mill	<input type="checkbox"/> Support development of a synthetic athletics facility at Petrie	Medium
Brisbane	QSAC	<input type="checkbox"/> Complete the QSAC master planning process and seek funding and support to enable necessary infrastructure upgrades	High
	University of Queensland	<input type="checkbox"/> Support the University of Queensland to upgrade the existing facility to World Athletics Class 2 specifications for all events	Medium
	Nudgee College	<input type="checkbox"/> Support Nudgee College to replace the synthetic surface and retain the site as a key community asset	Medium
Redland		No demand for an additional synthetic athletics facility	
Logan	Unconfirmed site	<input type="checkbox"/> Support development of a synthetic athletics facility that is well-located within an area of residential growth in the south-east of the City	Medium
Gold Coast	Pizze Park Griffith University	<input type="checkbox"/> Support the development of a full synthetic facility at Pizze Park	High
		<input type="checkbox"/> Support Griffith University upgrade the existing facility to World Athletics Class 2 specifications and retain as a key community asset through strategic partnerships with key user groups. Preferred upgrades include: <ul style="list-style-type: none"> <li>- synthetic replacement</li> <li>- lighting upgrades</li> <li>- PA system upgrades</li> <li>- provision of a storage facility</li> <li>- facility management fencing</li> </ul>	High
Ipswich	Unconfirmed site	<input type="checkbox"/> Seek funding support to construct a full synthetic athletics facility to World Athletics Class 2 specifications in Ipswich	High
Toowoomba	University of Southern Queensland	<input type="checkbox"/> Support the development of a full synthetic athletics facility at the University of Southern Queensland in Toowoomba to World Athletics Class 2 specification	High

### Prioritising the High Priority actions

Of the High Priority synthetic facility recommendations, a proposed further priority order could be: Pizze Park Gold Coast; QSAC; Rockhampton; Toowoomba; Ipswich; Bundaberg replacement; University of the Sunshine Coast replacement and synthetic 'D' development; and Griffith University Gold Coast replacement and upgrade. Clearly, the availability of funding will determine the ultimate order of project delivery.

### Future synthetic athletics facility network

The map on the adjoining page highlights the synthetic athletics facility network in Queensland if the State Facilities Plan for Athletics is fully enacted. It highlights that north of Rockhampton, synthetic athletics facilities would be no more than 4.5hrs drive apart (meaning most coastal residents should not have to drive more than 2hrs to attend a synthetic facility). South of Rockhampton, most coastal residents are within 1hr to 1.5hrs drive of a synthetic athletics facility. From the Sunshine Coast south, the vast majority of residents would be within 30mins drive of a synthetic athletics facility.

It should be noted that the State Facilities Plan has not considered any impact from the athletics facility set to be developed at Victoria Park for Brisbane 2032 (nor the nearby athletics warm up facility). The athletics infrastructure at both of these venues is expected to be removed after the Games. However, opportunities for the synthetic surfaces to be re-purposed post-Games (and/or for the warm-up facility to be retained to service central and inner-northern Brisbane) should be strongly considered.

## Location of synthetic athletics facilities as identified in the State Facilities Plan



### EXISTING FACILITIES

- 1 - Barlow Park, Cairns
- 2 - Townsville Sports Precinct, Townsville
- 3 - Mackay Aquatic and Recreation Complex Athletics Facility, Mackay
- 4 - Bundaberg Super Park, Bundaberg
- 5 - University of Sunshine Coast, Sippy Downs
- 6 - The Glennie School, Toowoomba
- 7 - Nudgee College, Boondall
- 8 - University of Queensland, St Lucia
- 9 - State Athletics Facility, Nathan
- 10 - Queensland Sports and Athletics Centre, Nathan
- 11 - Ormiston College, Ormiston
- 12 - Sheldon College, Sheldon
- 13 - Canterbury College, Waterford
- 14 - Gold Coast Performance Centre, Runaway Bay
- 15 - Griffith University (Gold Coast), Southport
- 16 - Somerset College, Mudgeeraba

### PROPOSED FACILITIES

- 17 - Central Queensland University, Rockhampton
- 18 - Unconfirmed site, Gladstone
- 19 - The Mill, Petrie
- 20 - Unconfirmed site, Ipswich
- 21 - University of Southern Queensland, Toowoomba
- 22 - Unconfirmed site, Logan
- 23 - Pizzey Park, Miami